



New
Private Markets

Impact Investor Summit

North America 2023

31 October - 1 November 2023
Westin New York at Times Square, New York

**The next generation of
private market opportunities**

PEI

Contents

- » Event stats ➔
- » Agenda highlights ➔
- » Featured speakers ➔
- » Networking opportunities ➔
- » Sample attendees ➔
- » Sponsors ➔
- » Book now ➔

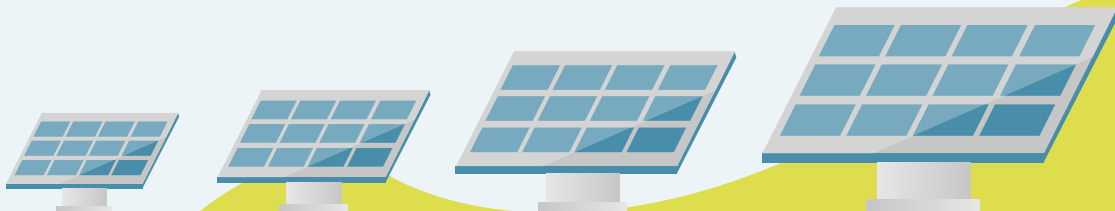
The Impact Investor Summit is the leading conference for learning how private market investors are engaging with the growing momentum in impact investing to tackle the world's biggest social and environmental challenges.

Join over 350 attendees from specialist impact fund managers, general asset managers and institutional investors for two days of networking at the must-attend event for impact investment professionals.



The event gathered the top names in impact investing and covered key topics to promote the understanding and growth of this market. The organisation and execution was impeccable.

Diane Damskey
Head of Secretariat



Impact Investor Summit in numbers



350+

Attendees



100+

Speakers



60+

Investors



20+

Industry-leading
sessions



3

streams on
environment,
social and impact
innovation



2

Inspirational
keynotes



20+

Hours of
networking
time

Agenda highlight: plenaries

[View the full agenda ↻](#)

State of the market: the evolution of impact investing in North America

- ESG vs impact investing: how clear is the distinction in the market?
- What are the implications of the ESG backlash on impact investing?
- How are macroeconomic challenges such as inflation and rising interest rates going to effect impact investing?
- What opportunities have been opened because of enabling legislation such as the Inflation Reduction Act?

Institutional investor panel: the role of impact in LP portfolios in the coming decade

- What are the allocation priorities of institutional investors?
- What is the opportunity universe and how are allocators filtering their investing strategies?
- Does the term 'impact' still connote as 'concessionary' in LP minds?
- What issues are getting funding, and which aren't?

Climate investing & the Inflation Reduction Act (IRA): digesting the investment opportunity landscape

- What is the scale of investment opportunity that is present because of the Inflation Reduction Act?
- What investment opportunities has the IRA legislation enabled?
- What verticals and types of assets are investors most looking to get exposure to?
- Will there be copycat legislation in Europe to accelerate the decarbonisation and the clean energy transition?

Agenda highlight: streams

[View the full agenda ↻](#)



Environmental impact

- Emerging tech in climate investing: where is the smart capital being deployed?
- Impact in food systems and sustainable agriculture
- Impact opportunities in the energy transition and electrification
- Natural capital and nature-based solutions: believe the investment hype?



Inequality impact

- Scaling solutions to inequality: what models of change are taking off?
- Next phase of DE&I: what investable models of change are taking DE&I investing to the next level?
- Healthcare impact: an overview of leading investments
- Education, workforce and better work impact funds: overview of investment stories



Impact innovation

- The future of corporate investors in the impact market
- Impact fundraising in difficult times
- Impact fund structures: aligning intention, incentives and outcomes
- Circularity impact: investing for a circular economy

Hear from top impact investment professionals:



Mark Berryman

Managing Director of Impact
Investing
Caprock



Andrea Biernat

Principal, Impact Investing
**Apollo Global
Management**



Melissa Cheong

Managing Partner
Blackcorn Ventures



Todd Cook

Managing Partner
**Bain Capital Double
Impact**



Diane Damskey

Head of Secretariat
**Operating Principles for
Impact Management**



Luyen Doan Tran

Chief Development Impact
Officer
IFC



Jessie Duncan

Program Director
**Tipping Point Fund on
Impact Investing**



Temple Fennell

Principal Family Member,
Keller Family Office
Keller Enterprises



Peter Fox Penner

Chief Impact Officer
Energy Impact Partners



Mark Hays

Managing Director, Director
of Sustainable and Impact
Investing
Glenmede

[View the full speaker list](#) ➔

Hear from top impact investment professionals:



Steve Hellman
Managing Partner
Mobility Impact Partners



Tom Jorgensen
Managing Director
North Sky Capital



Jennifer Kenning
CEO & Co-Founder
Align Impact



Jack Moriarty
Founder & Executive Director
Ownership America



Menaka Nayar
Associate
Kirkland & Ellis



Matt Onek
Chief Executive Officer
Mission Investors Exchange



Jessica Pan
Senior Portfolio Manager -
Private Equity
APG Asset Management



Roraj Pradhananga
Partner, Managing Director of
Research
Veris Wealth Partners



Philip Reeves
Founding Partner
Apis & Heritage Capital Partners



Abrielle Rosenthal
Managing Director, Chief
Sustainability Officer, Chief
Human Resources Officer
TowerBrook Capital Partners

[View the full speaker list ➔](#)

Hear from top impact investment professionals:



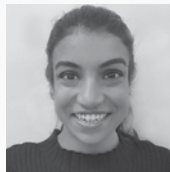
Gabrielle Rubenstein
Co-Founder &
Managing Partner
Manna Tree Partners



Robert Schultz
Partner
Capricorn



Fran Seegull
President
**U.S. Impact Investing
Alliance**



Snehal Shah
Reporter
New Private Markets



Jon Shell
Managing Director & Partner
Social Capital Partners



Tazia Smith
Chief Operating Officer
& Head of Capital
Partnerships
Closed Loop Partners



Marieke Spence
Executive Director
**Impact Capital
Managers**



Megan Starr
Global Head of Impact
Carlyle



Chavon Sutton
Senior Investment Director,
Sustainable & Impact
Investing Research
Cambridge Associates



Bhavika Vyas
Managing Director, Impact
Investing
Stepstone Group

[View the full speaker list](#) ➔

Networking opportunities available across the summit

1

Connect ahead of the event

Improve your event experience by viewing the delegate list in advance on our event networking app. Send messages to your peers and set up meetings to kickstart your future fundraising.

2

Join focused discussions

Choose between 3 streams (Environment, Social and Impact Innovation) to ensure you are hearing from like-minded people. Put your questions to the expert speakers and leave with insights relevant to your strategies.

3

Relax and interact

Network with institutional investors and your peers during networking drinks, interactive workshops, invite-only breakfasts and more. Confirmed attendees include the likes of APG, Apollo, Bain Capital Double Impact, Blackhorn Ventures, Caprock, Carlyle, CDPQ, Glenmede, Global Endowment Management, UBS Global Wealth Management, and many more.

Who will you meet?

Sample of previous attending companies:

- | | | | |
|----------------------------|--------------------------|-----------------------------|---------------------------|
| » ABC Impact | » Bridges Fund | » Eka Ventures | » Institutional Investors |
| » Actis | » Management | » Ellen MacArthur | » Group on Climate |
| » Adamantem Capital | » CalPERS | » Foundation | » Change (IIGCC) |
| » Aliath Bioventures | » CalSTRS | » Energize | » InterAlpen Partners |
| » Allianz Global Investors | » Cambridge Associates | » ENOWE | » Investment Fund for |
| » Alpha Associates | » Campbell Lutyens | » EQT | » Developing Countries |
| » AlpInvest Partners | » Candriam | » Eurazeo | » Joseph Rowntree |
| » Alvarium | » Capricorn Investment | » FIIND Impact | » Foundation |
| » Ambienta | » Group | » Finnfund | » JP Morgan Private Bank |
| » Anthos Fund & Asset | » Children's Investment | » GreenTrade | » Just Climate |
| » Management | » Fund Foundation | » Guys & St Thomas | » Kartesia |
| » AP6 | » Chronos Sustainability | » Foundation | » Keller Enterprises |
| » Arcano Partners | » Citi Social Finance | » Guy's and St Thomas' | » KFW CAPITAL |
| » ARI Holding | » Closed Loop Partners | » Foundation | » Kirkland & Ellis |
| » AZR Capital | » COFRA | » Hamilton Lane | » L Catterton |
| » Bain Capital Double | » Collective Action | » HarbourVest Partners | » Leapfrog Investments |
| » Impact | » Collier Capital | » HealthQuad | » Legal and General |
| » Bfinance | » Counselrock Partners | » Helios Investment | » Capital |
| » Big Society Capital | » Courageous Capital | » Partners | » London School of |
| » Bitgreen | » Advisors | » HSBC Insurance | » Economics |
| » Blue Earth Capital | » Critical Minerals | » Hy24 | » Low Carbon |
| » BlueMark | » International Alliance | » IH International Advisors | » M&G Investment |
| » BlueOrchard | » DWS | » IMAS Foundation | » Management |
| » Blume Equity | » EBRD | » Impax Asset | » Mallinckrodt Foundation |
| » Bregal Sphere | » EIRIS Foundation | » Management | » And many more |

Sponsors

Lead sponsor



Sponsors



KIRKLAND & ELLIS

Principle support partner



For more information on sponsorship opportunities still available contact
Tyler Mitchell (tyler.m@pei.group | +1 646 795 3279)

New
Private Markets

Impact Investor Summit

North America 2023

Book by 8 September and save \$230

**Join the North American impact investor
event focused on private markets**

Book now 

PEI