



Private Equity
International

Women in Private Markets Summit London 2022

30 November - 1 December | Royal Lancaster Hotel, London

**Showcasing diverse talent
across private markets**
1 Summit. 4 Forums.

PEI

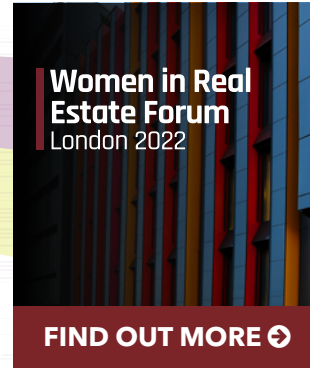
Contents

- » Event overview ➞
- » Networking opportunities ➞
- » Forum highlights ➞
- » Featured speakers ➞
- » Connect with the community ➞
- » Sponsors ➞
- » Book now ➞



1 SUMMIT. 4 FORUMS.

Back in London for 2022, bringing together women across private equity, infrastructure, real estate and private debt.



Networking opportunities available across the summit

Returning to London in its 9th year

Join the summit in-person this December and start diversity conversations with a global community through the many networking opportunities we have on offer.

1

Build connections in-person

The agenda is curated to enhance networking opportunities with small group discussions. There will be interactive working groups, breakfast think tanks, roundtable discussions, cocktail receptions and a seated networking lunch.

2

Build a valuable private markets network

Learn from and meet with practitioners from across private markets with an agenda covering all the topics impacting alternatives. Delegates can move freely between individual forums and networking breaks take place all together.

3

Meet global investors

Attendees already registered include AIMco, APG, Border to Coast, CPPIB, Omers, Pension Protection Fund, PSP Investments, Railpen, The Phoenix Group and many more.

[DOWNLOAD THE SAMPLE ATTENDEE LIST](#) 

Featured sessions at

Women in Private Equity Forum London 2022



Democratisation: how fund managers can position themselves to take advantage of this trend

- » What is the threshold for investment and is this changing?
- » Considering the risks of opening the market to less sophisticated investors
- » How significant is the opportunity for private equity?



The evolving investor relations role in private markets

- » Has covid fundamentally changed fundraising?
- » The importance of a tailored, quality customer service and communications throughout the relationship
- » ESG - increasing demands for targets, data and transparency in private markets



How the PE playbook will need to adapt with inflation and interest rates increasing

- » Why generating returns is getting harder for investors
- » Will funds have to invest more heavily in value creation efforts to generate returns?
- » Are funds likely to have to lengthen hold periods?

[View full agenda](#) ↻

Featured sessions at

Women in Infrastructure Forum
London 2022

Women in Private Markets Summit



The new core infrastructure? How debt is providing security and opportunity for forward-thinking investors

- » To what extent infra debt is outperforming other strategies with fewer defaults and higher recoveries?
- » Finding value across the capital structure in the quest for core-level return generation
- » The big names and big launches flooding to market as the sub-asset class matures



How ESG is transforming investor views of the asset class

- » How are investors working with fund managers on more challenging investments?
- » When and why are allocations being withdrawn due to ESG issues?
- » Views on infra managers compared to other private market strategies



Defining social infrastructure and identifying the boundary between infra and real estate

- » How the market now defines and measures social infrastructure
- » Identifying the gaps in social infrastructure investment
- » Identifying where the boundary is between social infrastructure and real estate and where investors can seek returns

View full agenda ↻

Featured sessions at

Women in Real Estate Forum London 2022



Scaling investment in emerging sectors

- » Explore investment strategies in up-and-coming sectors
- » Debate which sectors will become institutionalised
- » Understand how different investors are looking to accelerate and scale deployment in non-traditional sectors



Opportunities in the real estate debt and finance market

- » Overview of most notable deals taking place in the market in the last year
- » Exploring how liquid emerging sectors are within the European market
- » Learn about challenges faced by underwriters in large loan deals



The future of office 3.0

- » Explore the state of offices across key markets
- » Understand how premium, tier 1 offices are being developed
- » Application of the wellness concept to office assets

[View full agenda ↻](#)

Featured sessions at

Women in Private Debt Forum London 2022

Women in Private Markets Summit



State of private debt: harnessing the momentum of a buoyant market

- » What scale of evolution and growth can we expect in this now fully mature asset-class?
- » Assessing the GP landscape in a competitive market
- » Inflation expectations, ESG evolution, valuation reforms and more



Investor panel: strategy selection, risk mitigation and more in an era of unpredictability

- » What are the key factors driving manager selection?
- » Appetite for co-investment, secondaries and other emerging strategies
- » What are the biggest challenges for investors in managing portfolio risk?



Evaluating the continuing ESG and impact integration in private debt

- » The rise of sustainability-linked loans driving an engagement approach at the portfolio level
- » Varying investor attitudes towards ESG and impact in credits
- » The impact of regulatory challenges particularly SFDR

[View full agenda](#)

Highlighted speakers



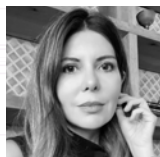
Amandine Ayrem
Managing Director
Eurazeo



**Jacqueline van
den Ende**
CEO & Co-founder
Carbon Equity



Victoria James
Investment Manager
Moonfare



Adriana Ballard
Private Equity Portfolio
Manager
**Employees Retirement
System of Texas (ERS)**



Nadine Fugert
Principal, Investor
Relations
Adams Street Partners



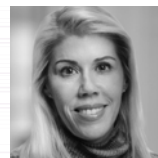
Anne Philpott
Managing Director
**Churchill Asset
Management**



Carolin Blank
Managing Director
Hamilton Lane



Michele Giddens
Co-Founder and Co-
CEO
**Bridges Fund
Management**



Jennifer Prosek
Founder and Managing
Partner
Prosek Partners



Marie Dzanis
Head of EMEA
**Northern Trust Asset
Management**



Janice Ince
Managing Director
Pantheon



Vanessa Shia
Head of Private Markets
London LGPS CIV



Isela Bahena
Managing Director,
Infrastructure
Investments
Nuveen Infrastructure



Barbara Boos
Head of Climate and
Infrastructure Fund
Investment
**European Investment
Fund**



**Floortje
Brouwers**
Senior Vice President
GIC Private Markets



Gwenola Chambon
CEO-Managing Partner
**Vauban Infrastructure
Partners**



Laurie Mahon
Vice-Chair, US Investment
Banking, Global
Investment Banking
CIBC Capital Markets



**Devina
Parasuraman**
Director
**Igneo Infrastructure
Partners**



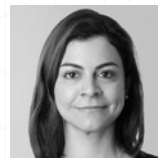
Esther Peiner
Managing Director,
Co-Head Private
Infrastructure Europe
Partners Group



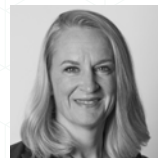
Chantale Pelletier
Global Head of
Infrastructure
Schroders Capital



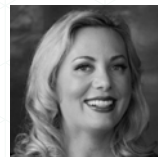
Patricia Rodrigues
Member of Investment
Committee
GLIL Infrastructure



Xenia Sarri
Managing Director
Lincoln International



**Dr. Angelika
Schöchlin**
Senior Partner
Antin Infrastructure



Nicole Walker
Partner and Chief
Commercial Officer
Morrison & Co

Highlighted speakers



Francesca Boucard
Head Real Estate Research
& Strategy
**Swiss Life Asset
Managers**



Shuen Chan
Head of ESG
LGIM Real Assets



Gila Cohen
Chair, Investment
Advisory Board
MUFG



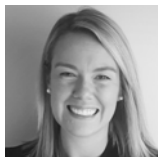
Maggie Coleman
Managing Partner, Private
Capital Advisory, Real Estate
Sera Global



**Christina
Djambazca**
Associate, Real Estate
GRESB



Kristy Heuberger
Co-Head of the
Americas
**LaSelle Investment
Management**



Dee Korab
Relationship Director -
Real Estate Finance
HSBC UK Bank



Ami Kotecha
Co-Founder
Amro Partners



**Ljiljana
Macdonald**
Managing Director,
Distribution
**Optimum Asset
Management**



Ellie Perlman
CEO
Blue Lake Capital



Aparna Sehgal
Partner
Dechert



Lynn Smith
Managing Director,
Head of Sustainability &
Development
Europa Capital

Highlighted speakers

Highlighted speakers



Sweta Chanda
Managing Director, Head
of Business Strategy
Monroe Capital



Barbara Ellero
Partner, Head of Private
Debt
Anthilia Capital Partners



Dalit Nuttall
Principal
West Valley Capital



**Alexandra
Davidson**
Global Head of Funds &
Investment Management
Clifford Chance



Sabrina Fox
Executive Director
**European Leveraged
Finance Association**



Nicole Waibel
Managing Director
**Crescent Credit
Europe**



Nicole Downer
Managing Partner
MV Credit



Kirsten Hagen
Co-Founder & Partner
Brinley Partners



Tricia Ward
Director,
Head of Private Credit
Redington



Aude Doyen
Managing Director
Lincoln International



Jennifer Hartviksen
Managing Director,
Global Credit
**Investment
Management
Corporation of Ontario
(IMCO)**



Deborah Zurkow
Global Head of
Investments
AllianzGI

Connect with the private markets community

Current attendees include:

- | | | | |
|----------------------------------|--------------------------------|----------------------------|------------------------------------|
| » Abu Dhabi Investment Authority | » Cretney Williams Investments | » ICG | » Pension Protection Fund |
| » Actis | » CRICO | » IMCO | » Polar Structure |
| » Adams Street | » Curzon | » Infranode | » PSP Investments |
| » AIMCo | » Delancey | » KKR & Co. | » Railpen |
| » AllianzGI | » EnTrust Global | » Langham Hall | » Redington |
| » APG | » Eurazeo PME | » Lexington Partners | » Schrodgers Capital |
| » Asian Development Bank | » European Investment Bank | » Lgim Real Assets | » Signal Iduna Asset Management |
| » ATOZ | » Evercore | » Lincoln International | » Swiss Life Asset Managers |
| » Baumont Real Estate Capital | » Fidelity International | » London Lgps Civ | » Texas Employee Retirement System |
| » Blue Owl Capital | » FIRSTavenue | » Macquarie Group | » The Phoenix Group |
| » Boarder to Coast | » Fluid Ice | » Monroe Capital | » Trilantic Capital Management |
| » Bridges Fund Management | » Generate Capital | » Montana Capital Partners | » Vauban Infrastructure |
| » Brinley Partners | » Georgian Partners | » Neuburger Berman | » Whitehorse Liquidity Partners |
| » Capiton | » GLIL | » Nuveen | |
| » Carbon Equity | » HarbourVest Partners | » Pantheon | |
| | » HSBC | » Partners Group | |

DOWNLOAD THE SAMPLE ATTENDEE LIST ➔

Sponsors

Principal sponsor



Lead sponsors



Sponsors



For more information on available sponsorship opportunities please contact
Christopher Wagland | chris.w@peimedia.com | +44 (0) 207 566 5475

[Submit an enquiry](#) ➔

Private Equity
International

Women in Private Markets Summit

London 2022

Book by 30 September and save £200

Get full summit access and attend all four forums.

BOOK NOW ➔

Institutional investors may be eligible for a complimentary place.

Please contact luca.g@peimedia.com for more information.

As part of our commitment to sustainable and responsible business practices, PEI Media has embedded the Ten Principles of the United Nations Global Compact into strategies and operations, and committed to respecting human and labour rights, safeguarding the environment, and working against corruption in all its forms.

WE SUPPORT

