

Infrastructure
Investor

Global Summit Berlin 2022

21-24 March

**Sustainability, resilience,
diversity: driving
infrastructure for the
next generation**

PEI



Hands-down the best and most important infrastructure event.

Piotr Nagorka
Kommunalkredit Austria

2000+ global attendees

400+ institutional investors

\$1trn capital in the room

50+ countries represented

Returning in March 2022, the next edition of the Global Summit will be the biggest and best yet.

Attend alongside the **world's largest gathering of institutional investors** actively allocating to infrastructure. Hear from the **most inspirational keynote speakers and infrastructure's best and brightest** as they share their invaluable insights. Take part in **unrivalled networking opportunities** focused on developing those crucial connections.

The Global Summit 2022 is putting sustainability and diversity at the heart of the agenda. Join us and make sure your voice is heard.



What's new in 2022?

1

More investors

We are expanding the venue capacity to allow for a larger investor audience. Expect the return of the world's leading investors, looking for opportunities in infrastructure.

2

More networking

Increased dedicated networking time throughout the agenda will provide you with the best networking experience to date. We have expanded space for public and private meeting tables and included extra places to meet others in a more relaxed environment.

3

More insights

We are excited to announce the new **II Lab**, a dedicated space to meet the speakers and take part in other offstage speaker content. Talk directly to some of the biggest names in the industry and discuss pioneering areas of infrastructure and what the future looks like for the asset class.

4

Never been to the Summit before?

Join other first timers at the Newbies Lounge and benefit from a tailored experience to help you make the most out of the event. We'll give you a tour of the venue, help you meet others and get you acquainted.



Brilliant event. The conference provided a great opportunity to get the infrastructure community back together.

Tom Maher
Whitehelm Capital

Join our network of global institutional investors, including:

- ABL Life Insurance
- Abu Dhabi Investment Authority
- Abu Dhabi Pension Fund
- Achmea Investment Management
- Aflac Asset Management
- AIA Life Insurance
- AIMCo
- AISIN Employees' Pension Fund
- Alberta Investment Management Corp
- Albourne Partners
- Allianz
- Alpha Associates
- Alte Leipziger-Hallesche Versicherung
- AP Pension
- APG Asset Management
- Ärzteversorgung Westfalen-Lippe
- Asian Development Bank
- Asian Infrastructure Investment Bank
- AustralianSuper
- Aware Super
- AXA
- Bank of Yokohama
- Bankia
- Bayerische Versorgungskammer
- Benesse Group Pension Fund
- Border To Coast Pensions Partnership
- British Columbia Investment (BCI)
- Canada Development Investment Corporation
- Canada Pension Plan Investment Board
- Cassa Depositi e Prestiti
- Cathay Life Insurance
- CDC Group
- City of Fresno Retirement Systems
- Commonwealth Superannuation Corporation
- Construction Workers Mutual Aid Association
- Continentale Lebensversicherung
- CPP Investments
- Daido Life Insurance
- Dai-ichi Life International
- DB Insurance
- DENSO Pension Fund
- Desjardins Global Asset Management
- Development Bank of Japan
- DGB Life Insurance
- Duskin Pension Fund
- Employees Provident Fund Board
- European Bank for Reconstruction and Development
- European Investment Bank
- FAROS Fiduciary Management
- First State Super
- Fjarde AP-fonden (AP4)
- Fresno County Employees Retirement Association
- Fujifilm Holdings
- GIC
- GLIL Infrastructure
- Government Pension Investment Fund
- Greater Manchester Pension Fund
- Hansainvest Real Assets
- HQ Trust
- HRM Pension Plan
- Hulic
- HVB Pension Fund
- Hyundai Insurance
- IBM Retirement Funds
- IMAS Foundation
- IMCO
- Japan Post Bank
- Japan Post Insurance
- JSW Group
- KDB Life Insurance
- Korea Investment Corporation
- Kreissparkasse Heilbronn
- Lansforsakringar
- Laval University Pension Fund
- LGIAsuper
- London CIV
- LPPI
- M&G Investments
- Manulife
- Meritz Fire & Marine Insurance
- MetLife Insurance
- MIGA - World Bank
- Mirae Asset Life Insurance
- Mitsubishi UFJ Trust and Banking
- Mitsui Sumitomo Primary Life Insurance

- MN
- MUFG Bank
- National Agricultural Cooperative Federation
- National Pension Service
- New Development Bank
- New Jersey Division of Investment
- New York City Retirement System
- NewYork-Presbyterian Hospital
- Nippon Life Global Investors
- Nissay Asset Management Corporation
- NN Group
- Nomura Funds Research & Technologies
- Nordrheinische Aerzteversorgung
- Norfund
- Nykredit
- NZ Super Fund
- Obligo Investment Management
- OP Life Assurance
- ORIX Life Insurance
- Pension Protection Fund
- PensionDanmark

- Perpetual Investors
- Phoenix
- Provinzial NordWest Asset Management
- PSP Investments
- Public Institution for Social Security
- R+V
- RAG-Stiftung
- RPMI Railpen
- RV Lebensversicherung
- Sacramento County Employee Retirement System
- Samsung Fire & Marine Insurance
- Scientists & Engineers Mutual-aid Association
- Scottish Widows
- SEB - Skandinaviska Enskilda Banken
- Sekisui Pension Fund
- Shinhan Life Insurance
- Signal Iduna Asset Management
- Skandia
- Sparkasse Schwarzwald-Baar
- Sparkassenversicherung
- State of Wisconsin Investment Board

- Sumitomo Mitsui Trust Bank
- SV Sparkassenversicherung Holding
- Sweco
- Swiss Re
- TD Securities
- The Bank of Yokohama
- The Dai-ichi Life Insurance
- The Police Mutual Aid Association
- Tong Yang Life Insurance
- Toronto Transit Commission Pension Plan
- Toyota Tsusho Corporate Pension Fund
- Trans-Canada Capital
- Uniqa
- United Nations Joint Staff Pension Fund
- University of California
- University of South Florida Foundation
- Utah Retirement Systems
- UTIMCO
- VBV Pensionskasse
- Washington State Investment Board
- World Bank Pension Plan
- Yielco



The event offered every participant a valuable platform for networking.

Stephane Vernay
Gide Loyrette Nouel

Unrivalled networking

The most efficient and effective way to connect with the world's investors.

1. PLAN AHEAD

Utilise the Global Summit event platform ahead of the event. View the attendee list and plan a shortlist of connections you would like to make across the week.



2. EASILY CONNECT

Start the conversation prior to the event to make your time in Berlin more valuable. Send private messages on the event platform directly to investors and funds looking for their next partnership and schedule meetings across the event week.



3. MEET THE RIGHT PEOPLE

Attend sessions from any of the specialist forums to network with people focused on the same interest areas as you. You can also use the event platform to filter the attendee list by areas of interest, investment strategies, region and much more prior, during and after the event.



4. BUILD VALUABLE RELATIONSHIPS

Utilise our dedicated meeting spaces throughout the event for 1-2-1s with the people you want to meet.



Explore the Global Summit [➔](#)

Make in-person connections

Keynotes

Our out-of-industry keynote line-up includes:

Francis Fukuyama

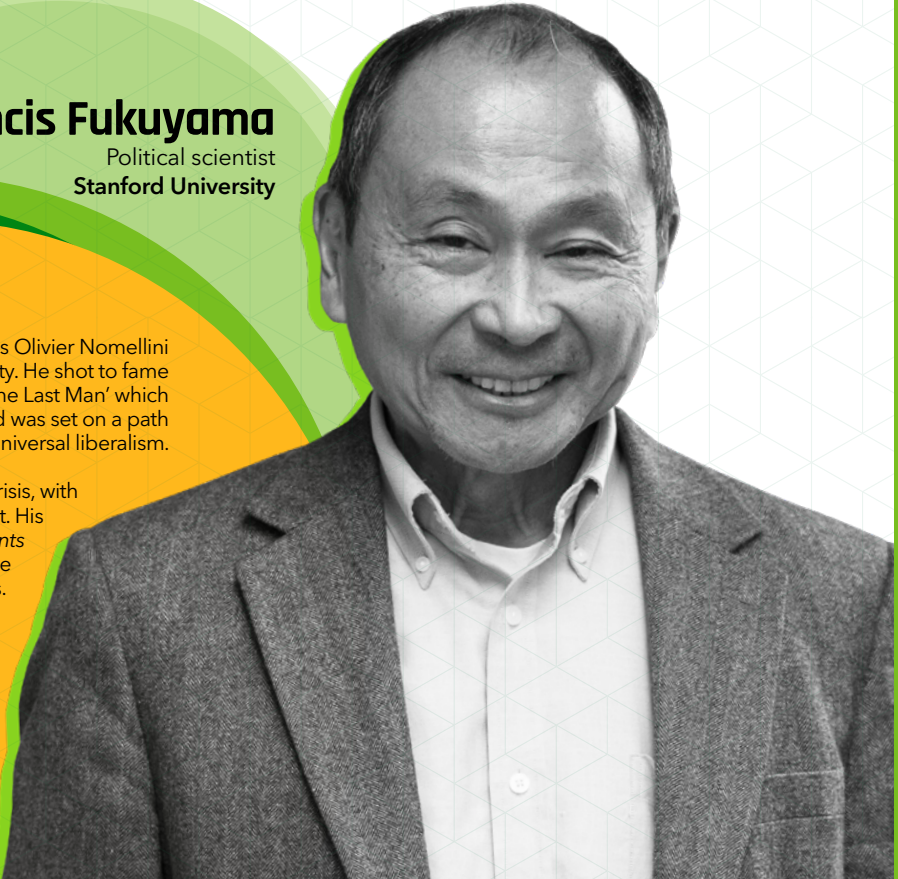
Political scientist
Stanford University

Francis Fukuyama is Olivier Nomellini Senior Fellow at Stanford University. He shot to fame with his book 'The End of History and the Last Man' which focused on the idea that the entire world was set on a path towards universal liberalism.

Fukuyama believes liberalism is in crisis, with challenges coming from both left and right. His latest book, *Liberalism and Its Discontents* which is out in March this year, sets out the cases for and against its classical premises.

Join Fukuyama at the Global Summit as he discusses whether liberalism is obsolete, and explores the themes of his book, which he will be exclusively signing for attendees.

Explore the Global Summit [→](#)



Be inspired



Nicole Perloth

Advisor

Cybersecurity and Infrastructure
Security Agency (CISA)

Nicole Perloth spent a decade as the lead cybersecurity reporter for The New York Times. Her investigations rooted out Russian hacks of nuclear plants, airports, elections, and petrochemical plants; North Korea's cyberattack against movie studios, banks and hospitals and thousands of other attacks against critical infrastructure.

Perloth has recently won the Financial Times and McKinsey Business Book of the Year for 2021, with her investigation into the cyber weapons arms race, *This Is How They Tell Me the World Ends*.

Hear from Perloth as she discusses cyber security, critical national infrastructure and digitisation and what could possibly go wrong?

Be inspired

Gillian Tett

Chairman of the US Editorial Board
and America Editor-at-Large
Financial Times

Gillian Tett is a multi-award winning journalist with a track record of predicting important trends that impact the world, including the credit crunch crisis and the rise of populism.

Her latest book, *Anthro-Vision*, details how businesses can revolutionise their understanding of human behaviour by studying consumers and organisations through an anthropological lens.

Join Gillian in March and find out about the art and science of leadership with an anthropological take on business. Gillian will also be signing copies of her book, exclusively for event attendees in Berlin.



Be inspired

Speakers

Gain insights from more experts than ever before, including:



Amal-Lee Amin
Director, Climate Change
CDC Group



John Anderson
Global Head Corporate
Finance & Infrastructure
Manulife



Canan Anli
President
ECA Advisory



Jemima Atkins
Assistant Vice President,
Infrastructure Debt
**Allianz Global
Investors**



Deepali Bahl
Managing Director
Augment Infrastructure



Alexander Bebov
Managing Director
BAC Securities



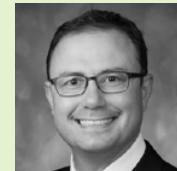
Aditi Bhattacharya
Investment Specialist
**Asian Development
Bank**



Joss Blamire
Infrastructure Director
GRESB



Jane Bowes
Senior Vice President
Threadmark



Recep Kendircioglu
Global Head of
Infrastructure Equity
Manulife

Explore the Global Summit [↗](#)

Be inspired

Speakers



Alicia Eastman
President
InterContinental Energy



Claudio Ghisu
Managing Director
YIELCO Investments



Matthias Hamel
Partner
Altman Solon



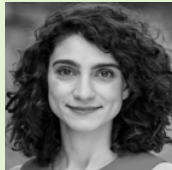
Severin Hiller
Co-Head of
Infrastructure Debt
Rivage Investment



Matthew Jordan-Tank
Director, Sustainable
Infrastructure Policy &
Project Preparation
EBRD



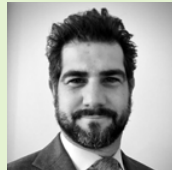
Steen Lønberg Jørgensen
Partner
Copenhagen Infrastructure Partners



Nadia Nikolova
Lead Portfolio Manager
Allianz Global Investors



Alex O'Connell
CEO & Founder
Gore Street Capital



Brett Orlando
Founder & Director
Net Zero Capital Advisory

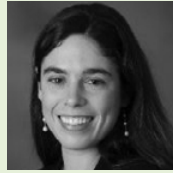


Alina Osorio
President
Fiera Infrastructure

Speakers



Rohini Pahwa
Managing Director
**Arjun Infrastructure
Partners**



**Marguerite Polge
de Combret**
Vice President
Macquarie Capital



Julia Pyke
Financing & Economic
Regulation Director
Sizewell C



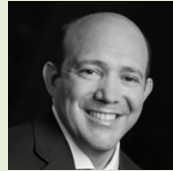
Patricia Rodrigues
Member of Investment
Committee
GLIL Infrastructure



Valeria Rosati
Senior Partner
Vantage Infrastructure



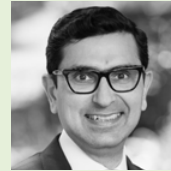
Prerna Soni
Vice President
Invest India



Matias Sottile
Founder
Ayres Partners



Marcus Steinig
CFO
Harvest Waste



Sarvesh Suri
Director
**MIGA World Bank
Group**



Simon Whistler
Senior Specialist
PRI

21 March

Emerging Markets Forum

Pursuing the momentum for change in emerging and frontier economies

- The results of COP26 and the repercussions for emerging markets
- How emerging market investors are integrating ESG requirements to their investment processes
- Familiar faces: where do the traditional sub-sectors of infrastructure sit within the emerging markets?
- Joining the dots - connecting the private capital to emerging market practitioners

ESG & Sustainability Forum

The route to net-zero post-COP26

- Practical considerations when infrastructure funds are setting science-based targets
- To what extent are investors challenging fund managers on their approach to climate?
- Ensuring emerging market assets contribute to the just transition
- How ESG is increasingly being used within wider value creation strategies

Social Infrastructure Forum

Investing in assets which provide essential services

- A seat at the table - what is social infrastructure's position within the infrastructure investment landscape?
- Building back better? The global outlook on social infrastructure
- The role, challenges, and changes of PPP structures
- The impact of SDGs, sustainability, and impact in social infrastructure



The Global Summit allows attendees to stay in touch and be at the pulse of a growing industry.

Lucas van Berkestijn
Susi Partners

Explore the Global Summit 

22 - 23 March

Global Investor Forum

The private infrastructure industry's annual general meeting

- What 'building back better' means for the asset class
- The new ESG landscape - making sense of net zero, climate change, COP26 and more
- Putting COP22 promises into action: what infrastructure investors can do today
- How sector-focused strategies can capitalise on market dislocations
- Debating the future of specialist and generalist products post-pandemic

24 March

Digital Infrastructure Forum

Navigating the route towards an inclusive global digital economy

- Closing the digital connectivity gap across the world
- The role digital infra can play in achieving sustainability targets
- Increased competition, generalist funds vs dedicated and more - assessing the evolving GP landscape
- Deploying at scale and perfecting operational capabilities - the keys to success for the future

Infrastructure Debt Forum

The evolving role of lending in the private infrastructure world

- The new core infrastructure class? How debt is providing security and opportunity for forward-thinking investors
- Moving with the times - how debt managers can improve their ESG integration
- Pinpointing the key infrastructure sectors ripe for debt investment in 2022 and beyond
- A preferred route to market? Investor appetite for infrastructure as a gateway to a broader debt mandate

Energy Transition Forum

Investing in the energy transition as the world moves towards net-zero

- What investment themes have come out of COP26?
- What is a 'fair' return for renewables and is there further yield compression to go?
- Balancing the grid and what full on electrification means
- Is green hydrogen the missing link in the energy transition?

Sponsors

Global Investor Forum

Principal Sponsors



Lead Sponsors

Brookfield

C L I F F O R D
C H A N C E



Schroders
capital



Charging Station
Sponsor

Barista Sponsor

Wifi Sponsor

Supporting Partner

Exhibitor



STONEPEAK



Explore the Global Summit [➔](#)

Global Investor Forum

Sponsors



ESG & Sustainability Forum

Lead Sponsors



Supporting Partner



Emerging Markets Forum

Lead Sponsors



Sponsors



Digital Infrastructure Forum

Lead Sponsor



Infrastructure Debt Forum

Lead Sponsor



Energy Transition Forum

Sponsor



Now exclusive to Infrastructure Investor Global Passport holders. **Secure your 12-month subscription** to join the community in Berlin, and to benefit from year-round connections with investors and your peers.

-  infrastructureinvestor.com/IIGS
-  customerservices@peimedia.com
-  +44 (0)20 7566 5444

Qualified investors may be eligible for a complimentary place (maximum 2 per company). Email luca.g@peimedia.com to apply for your place.

 [#IIGSummit](https://twitter.com/IIGSummit)



As part of our commitment to sustainable and responsible business practices, PEI Media has embedded the Ten Principles of the United Nations Global Compact into strategies and operations, and committed to respecting human and labour rights, safeguarding the environment, and working against corruption in all its forms.

“The Global Summit is
a must for professionals
working in the infra space.”

Christian Wertli
Swiss Re