

The PERE logo consists of a solid red vertical bar on the left, followed by the word "PERE" in a white, bold, sans-serif font.

PERE

Europe Summit London 2022

14-16 June | Hilton London Tower Bridge

**Secure allocations.
Build relationships.
Find investments.**

The PEI logo features the letters "PEI" in a white, bold, sans-serif font, centered within an orange square.

PEI

“PERE Europe was a great opportunity to connect live with interesting participants and experienced speakers from around the world.”

Lennart van Mierlo
NN Investment Partners

Contents

- » Members of the European network ➔
- » Keynote ➔
- » Our featured speakers ➔
- » Panels you can't miss ➔

“

*PERE Europe is a key event
to attend in my calendar
and always provides
excellent insight to the
state of the European real
estate market*

Raj Kotecha

Amro Real Estate Partners

Join real estate's most influential network

Start conversations with investors easier, maximize your exposure in the influential network, and build stronger relationships with global peers.

[Download attendee list](#) ↗

Members that attend the Europe Summit include:

- | | | | |
|--------------------------|------------------------|------------------------------|------------------------------|
| » Allianz Real Estate | » DZ HYP | » Landesbank Baden | » Ropes & Gray International |
| » AP2 Second Swedish | » Edmond de Rothschild | » Wurttemberg | » LLP |
| » National Pension Fund | » Egan-Jones | » M&G Real Estate | » Schroders |
| » AustralianSuper | » Eurazeo | » Macquarie | » Starwood Capital |
| » BlackRock Investment | » FAP Group | » Madison International | » StepStone |
| » Management | » Generali Real Estate | » Realty | » Stonal |
| » Blackstone | » GIC Private Limited | » Octopus Investments | » Stoneshield Capital |
| » Bouwinvest Real Estate | » Goldman Sachs | » Oxford Properties | » Stoneweg SA |
| » Investors | » Greystar | » Pension Protection Fund | » The Rangoonwala |
| » Canada Pension Plan | » Heitman LLC | » Prologis Inc | » Foundation |
| » Investment Board | » Ivanhoe Cambridge | » Qatar Investment Authority | » Therme Group |
| » CIM Group Inc | » JLL | » Quadreal | » Wimmer Financial |
| » Conduit Real Estate | » Knight Frank | » Resonance Asset | » Zurich Insurance |
| » DEVONO CRESA | | » Management LLP | » And many more... |



Keynote Q&A with Bouwinvest: **Finding returns in a new real estate climate**

The exclusive 30-minute Q&A session with Stephen will share the €14.1 billion specialist Dutch real estate investor's evolving international investment approach and where they're looking to find risk-adjusted returns.

A portrait of Stephen Tross, a bald man with a light beard and mustache, wearing black-rimmed glasses, a dark suit, a white shirt, and a patterned tie. He is smiling and looking towards the camera. The background is white with faint, light gray geometric lines.

Stephen Tross

Chief Investment Officer -
International Investments
Bouwinvest

Keynote Q&A with AXA: **Getting ahead of the curve - a deep dive into AXA's real estate strategy**

Isabelle Scemama, one of the global leaders in real estate, will have an in-depth discussion on how the €110bn investor has developed its strategy to stay one step ahead of the pack in a fiercely competitive market.

A portrait of Isabelle Scemama, a woman with short, wavy blonde hair, smiling at the camera. She is wearing a white, vertically-pleated blazer over a white top. The background is a light gray grid pattern.

Isabelle Scemama,
Global Head of **AXA IM Alts**
and Chief Executive Officer of
AXA IM - Real Assets



Our featured speakers



Robert-Jan Foortse
Head of European
Property Investments
APG Asset Management



Joseph Ghazal
Chief Investment Officer
Europe
Prologis



Michela Hancock
Managing Director,
Europe
Greystar



Ralf Kind
Managing Director, Head
of Real Estate Debt
Edmond de Rothschild
REIM



Annette Kröger
CEO North &
Central Europe
Allianz Real Estate



Jay Kwan
Managing Director, Head
of Europe, International
Real Estate
QuadReal Property
Group



Lee Marshall
Head of Real Estate
Pension Protection Fund



Daniel McHugh
Chief Investment Officer,
Real Assets
Aviva Investors



Joanne McNamara
Executive Vice President,
Europe and Asia-Pacific
Oxford Properties



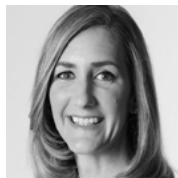
Kylie O'Connor
Global Head of
Real Estate
AMP Capital



Helena Olin
Head of Real Assets
AP2



Andrea Orlandi
Managing Director and
Head of Real Estate
Investments - Europe
CPP Investments



Tracy Stroh
Managing Director
GIC Real Estate



Martin Towns
Deputy Global Head of
Real Estate
M&G Real Estate



**Sophie van
Oosterom**
Global Head of Real
Estate
Schroders Capital

[View all speakers](#) ➔

Panels you can't miss

The 17th PERE Europe Summit will discover high-yield opportunities across European private real estate markets.

[Download agenda](#) ➔

Tuesday 14 June

Investor Day

The investor day will give you exclusive insight into where investors are looking for opportunities.

- » What does real estate investing look like in the next decade
- » Europe as an investment destination



Wednesday 15 June

Essential real estate

Understand investment strategies towards pandemic-hit markets from investors & fund managers.

- » Exploring the next phase of logistics and industrial investment
- » How to create value through an operational strategy



Thursday 16 June

Borrowers & Lenders Forum

Discover lending opportunities across sectors and markets.

- » Outlook of the real estate debt and finance market in Europe
- » Sustainability-linked loans: how are lenders incentivising impact and ESG in their portfolio?



Thursday 16 June

ESG & Impact Forum

Identify opportunities to create real world sustainability across assets and funds.

- » Fund investor perspectives on real estate sustainability
- » To rebuild or upgrade: calculating embodied carbon in real estate assets



Secure your place at the Europe Summit today

Attendees join real estate's most influential network

Attendance at the Summit is now exclusive to **Global Passport members** – our industry-leading investor/manager network. Membership gives you 12-months access to the connections, information and networking that will advance your business.

Join the Summit ➔

Events

Attend the Europe Summit and more

The Passport gives you in-person access to all industry-leading summits and forums across the world. Connect with global audiences and discover investment opportunities in all regions.



Insight

Gain knowledge for future growth

Keep your finger on the pulse of investor strategies and trends through access to frequent conversations with the biggest allocators, owners, tenants and operators across the globe.

Connect

Networking tailored just for you

Leverage PERE's unique investor relationships. Connect and schedule meetings with the right partners before and after Europe Summit. Enjoy exclusive, personalised networking service from our Global Networking Team.

With thanks to our sponsors

Lead sponsors



Sponsors



Supporting associations



Media partner



Affiliate publications



WE SUPPORT



As part of our commitment to sustainable and responsible business practices, PEI Media has embedded the Ten Principles of the United Nations Global Compact into strategies and operations, and committed to respecting human and labour rights, safeguarding the environment, and working against corruption in all its forms.

Contact us

For content information:
Boris Petrovic
boris.p@peimedia.com

For sponsorship opportunities:
Sponsorship Team
peresponsorship@peimedia.com

For event enquiries:
Customer Service Team
customerservices@peimedia.com