

Private Debt
Investor

Japan Korea Week 2022

8-10 November | Seoul and Tokyo

Post-event report

Key highlights, testimonials and
networking experiences from the conference

“A good opportunity to understand the private credit market through a diversified market view from GPs and LPs.”

Younghwan Kim
The Prudential Life
Insurance Company of Korea

Contents

- » Key highlights ➔
- » Our featured speaker ➔
- » Our attendees ➔
- » Attendee breakdown ➔
- » Networking opportunities ➔
- » Insights from the Week ➔
- » Thanks to our sponsors ➔
- » Join us again ➔





Key highlights from the Week

The 4th annual Private Debt Investor Japan Korea Week returned in-person in 2022, the biggest gathering of the private debt community in the region since the pandemic started. Welcoming 350+ attendees at the Seoul Forum and the Tokyo Forum, we were delighted to connect industry participants to investors through interactive live polls and Q&As, networking during luncheons and cocktails.

The Week brought together a multitude of local leading investors and global private debt fund managers to share the challenges and opportunities within private credit investing.

Thank you to our stellar lineup of event chairpersons, keynotes, panellists and moderators for bringing together a smooth-running conference full of insightful presentations and discussions.

Furthermore, a special thanks to our valued sponsors for supporting the event, and the PDI team who worked

effortlessly to bring the event back in-person again. With both Korean and Japanese investors' focus on the private debt asset class growing in appetite, Private Debt Investor Japan Korea Week will continue to be the leading platform where investors and managers can make long-term strategic plans and decisions.

As the producer of PDI events in Asia-Pacific, I welcome your feedback anytime. Please do drop me an email at niann.l@pei.group. We hope you enjoy all our valuable content including presentations and the PDI data pack in our event app. I look forward to meeting you again!

A handwritten signature in black ink, appearing to read 'Nian'.

Niann Lai
Senior Conference Producer
Private Debt Investor

Our featured speakers



Jinsuk Choi
Head of Sustainable
Investment Team
**Korea Investment
Corporation**



Brian Dillard
Partner and Head of Asia
Credit
KKR



Woong Han
Head of PE/PD Team
**Hyundai Marine &
Fire Insurance**



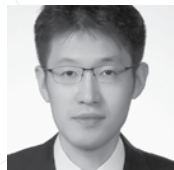
Tsutomu Ishida
Deputy General Manager
**Tokio Marine
& Nichido Fire
Insurance**



Vikas Keswani
Managing Director and
Head of North American
Specialty Lending
**HPS Investment
Partners**



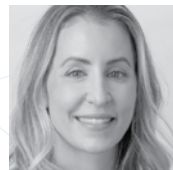
Celine Jeeyoun Kim
Senior Manager,
Alternative Investment
Team
**Lotte Non-Life
Insurance**



JR (Jeryang) Lee
Head of Strategic
Alternative Investments
Team
**National Pension
Service**

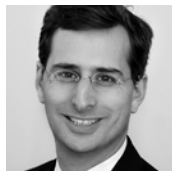


Wai Leng Leong
Managing Director and
Regional Head of Asia
Pacific
CDPO



Antonella Napolitano
Managing Director, Global
Head of Investor Relations
& Capital Formation
**Deerpath Capital
Management**

Our featured speakers



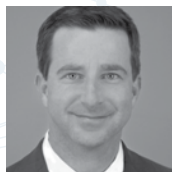
Greg Racz
Co-Founder and President
MGG Investment Group



David Ross
Managing Director & Head
of Private Credit
Northleaf Capital Partners



Augustin Segard
Head of Junior Debt
Schroders Capital



Chris Semple
Partner
Crestline Investors



Eriko Shoji
Director
Japan Post Bank



Yasuyuki Tomita
Executive Director, Head of
Private Equity Investments
Japan Science and Technology Agency (JST)

“The Forum gave me an insight into how Japanese investors view the market, their concerns and the returns they are looking for.”

Younghwan Kim
The Prudential Life
Insurance Company of Korea

Our attendees included

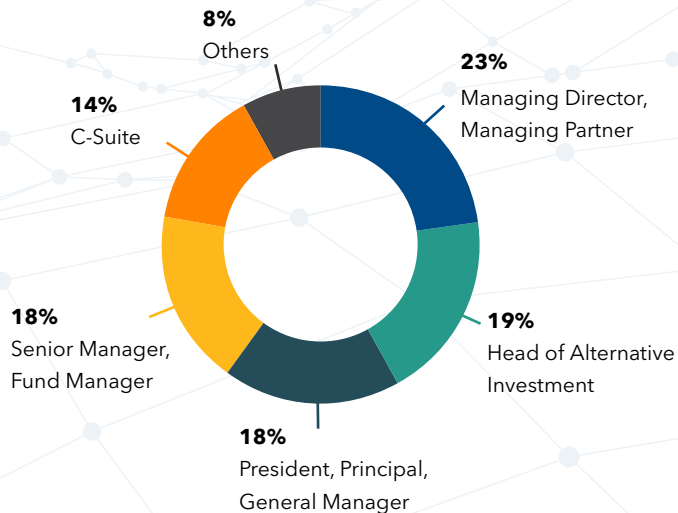
- » ABL Life Insurance
- » AISIN Employees' Pension Fund
- » Aozora Bank
- » Asahi Mutual Life Insurance
- » Daido Life Insurance
- » Government Employees Pension Service
- » Industrial Bank of Korea
- » International Christian University
- » Japan Highway Companyrpolation
- » Japan Post Bank
- » Japan Post Insurance
- » Japan Science & Technology Agency (JST)
- » Korea Fire Officials Credit Union
- » Korea Investment Corporation
- » Korea Investment Management
- » LINA Insurance Company of Korea
- » Lotte Insurance
- » Manulife
- » MDM Plus
- » Meijiyasuda Life Insurance
- » Meritz Fire & Marine Insurance
- » Mitsui Sumitomo Insurance
- » Mitsui Sumitomo Primary Life Insurance (MSPL)
- » National Kyosai Federation of Japan Agricultural Cooperatives (ZENKYOREN)
- » National Pension Service of Korea
- » National Pension Service of the Republic of Korea
- » Pension Fund Association
- » Pension Fund Association for Local Government Officials (Chikyoren)
- » Prudential Life Insurance Korea
- » Public Officials Benefit Association (POBA)
- » Resona Bank
- » Rikentechnos Pension Fund
- » Seoul Guarantee Insurance
- » Shinhan Bank
- » Sumitomo Life Insurance
- » The Korean Teachers' Credit Union
- » The Norinchukin Bank
- » The Police Mutual Aid Association
- » Tokio Marine Asset Management
- » Toyohashi Shoko Shinkumi Bank

“A helpful platform for me to network with other GPs and LPs.”

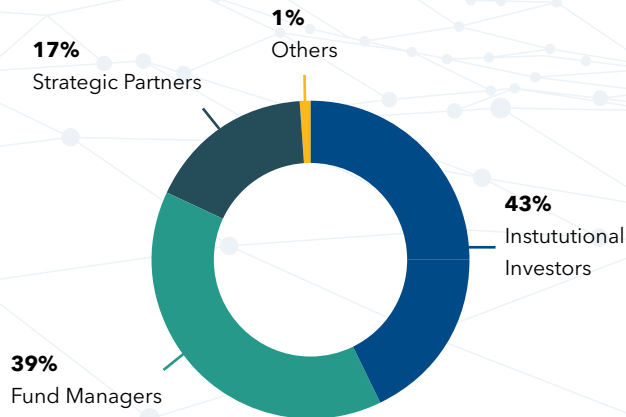
Keunyoung Kim
Lotte Insurance

Attendee breakdown

Seniority



Firm type



Unrivalled networking opportunities

300+
Attendees

2:1
LP :GP ratio

150+
Investors

6hrs+
Networking time

9 countries
represented

privatedebtinvestor.com/japankoreaweek/



8 of 11 | [back to contents](#)

Insights from the Week

"We think that likely there will be good opportunities in the mezzanine space as well, and opportunistic credit or distressed."

"The 948.7trn won pension, NPS' private equity and debt commitments increased by more than 38% last year and had committed 84.6trn won to private equity and private debt by year's-end."

Private Debt Investor

[Read more ↗](#)

"DGB Life Insurance noted that infrastructure debt accounts for much of the existing portfolio"

Korean insurer DGB targets PE, debt in mammoth alts push,
Private Debt Investor

[Read more ↗](#)



Thanks to our sponsors

[Register your interest](#)

Principal sponsor

KKR

 Crestline


INVESTMENT PARTNERS

 MGG
INVESTMENT GROUP

Northleaf

Schroders
capital

Sponsors


DEERPATH
CAPITAL MANAGEMENT, LP

 Egan-Jones
Ratings Company

FitchRatings

 华泰国际
HUATAI INTERNATIONAL


Women in Finance


ALTERNATIVE
CREDIT COUNCIL
A VOICE FOR SUSTAIN

 PALLAS
CAPITAL

 Partners Group
REALIZING POTENTIAL IN PRIVATE MARKETS

 WHITE OAK
GLOBAL ADVISORS

 ilpa
INSTITUTIONAL
LIMITED PARTNERS
ASSOCIATION

Contact Us

For programme information:
Niann Lai
niann.l@pei.group

For sponsorship opportunities:
Beth Piercy
beth.p@pei.group

For registration:
Luca Greene
Luca.g@pei.group

Join us again

Expand your network through our global events

9-11 May 2023 | London

PDI Europe Forum

6-7 September 2023

PDI New York Forum

17-18 October 2023

PDI Germany Forum

29-30 March 2023 | Singapore

PDI APAC Forum

26-29 June 2023 | Seoul & Tokyo

PDI Japan Korea Week

View global event calendar ➔