

Private Equity
International

Women in Private Markets Summit 2021

1-2 December | Royal Lancaster Hotel, London

Keeping diversity at the top of the agenda
1 Summit. 4 Forums.

PEI

Contents

- » Event overview ➡
- » Networking opportunities ➡
- » Keynote speaker ➡
- » Forum highlights ➡
- » Featured speakers ➡
- » Connect with the community ➡
- » Sponsors ➡
- » Book now ➡



1 SUMMIT. 4 FORUMS.

Back in London for 2021, bringing together **women across private equity, infrastructure, private debt and real estate.**



Networking opportunities available across the summit

Returning to London in its 8th year

Join the summit in-person this December in London and start diversity conversations with a global community through the many networking opportunities we have on offer.

1

Meet in-person once again

Connect with your peers at interactive workshops, networking breaks, an evening drinks reception, roundtable discussions and invite-only breakfasts. The agenda is designed to bring attendees together and presents more networking opportunities than ever before.

2

Build a valuable private markets network

Benefit from our expansive cross-asset class investor and fund manager community who will be in attendance throughout the summit. Build lasting relationships and compare best practices with your peers.

3

Private messaging

Message other attendees throughout your 6-month online platform access. Use advanced filtering to identify the people you want to meet at the event. Reach out, network, and make valuable connections at a time that suits everyone.

DOWNLOAD THE SAMPLE ATTENDEE LIST 

KEYNOTE

Cheryl Potter

Chair
Level 20

Building a career as a dealmaker in private equity

Level 20's Chair, Cheryl Potter will discuss why private equity still struggles to retain diverse talent. Sharing her learnings from a career spent on the deal team, how the industry can attract and retain more women, and the wider role of Level 20.



Get an expert's perspective

How industry leaders are walking the talk on diversity



Benoît Durteste
Chief Investment Officer
and Chief Executive
Officer
ICG



Phil Peters
Global Head of Client
Solutions Group
**Macquarie Asset
Management**



**Aranpreet
Randhawa**
Partner
Proskauer



Emma Watford
Partner
Bridgepoint



Deborah Zurkow
Global Head of
Investments
AllianzGI

Featured sessions at

Women in Private Equity Forum 2021



How well positioned is private equity to turn the crisis into an opportunity?

- » How important is private equity in getting the economy going again?
- » To what extent have types of investment changed in the past 18 months?
- » Dealing with parts of the portfolio which are still constrained by the pandemic



Why growth equity and venture capital are growing rapidly worldwide

- » Considering the differences and similarities of the two strategies
- » What does the movement of private equity heavyweights into the space mean for the market?
- » Are European investors getting more comfortable with venture capital and growth?



Emerging managers: what it takes to raise a first-time fund

- » Tapping investor networks and how to creatively approach newer sources of capital
- » Hustling the best deals or capital raising: which one to prioritise?
- » Team build-out: what should be the founding team's key priorities?

[View full agenda ↻](#)

Featured sessions at

Women in Infrastructure Forum 2021



Women in Private Markets Summit



Digital infrastructure: finding value in an ultra-competitive market

- » Areas of focus; sub-sector, strategy, and asset type
- » Competition for larger (\$1bn+) vs. mid-market transactions
- » Assessing exit strategies and hold periods for digital assets



Defining social infrastructure and where private capital fits into the ecosystem

- » Does a narrow or broad definition of social work best?
- » Why services constitute an important part of the sector
- » Differentiating social infrastructure from other asset classes



Opportunities in the energy transition as the world aims for net-zero

- » What is a 'fair' return for renewables and is there further yield compression to go?
- » Will capital allocations to renewables and the energy transition continue to increase?
- » Are funds getting crowded out of some parts of the market, and how can you differentiate?

[View full agenda](#)

Featured sessions at

Women in Real Estate Forum 2021



Real estate demand post-pandemic: finding opportunities in a dislocated market

- » Digesting impact macro-trends on real estate investing in the coming decade
- » Repositioning portfolios towards on alternatives and niche products
- » The relative attractiveness of debt investments and its wider role in investors' portfolios



The future of offices in a post-pandemic world

- » Overview of the pandemic's impact on aggregate office demand
- » The hotelization trend in taking an operational approach to office assets and what this means in practice
- » Alternative uses for sub-prime assets such as residential and the economics of repurposing assets



Why investors are flooding into life sciences

- » Breakdown of the fundamentals driving interest and capital to life sciences
- » Tenant profile and landscape of opportunities across regions
- » How do investors position themselves to find the right opportunity or next significant location?

View full agenda ➔

Featured sessions at

Women in Private Debt Forum 2021



How has private debt fared in comparison with other investment strategies in the past few months?

- » Why has private debt proven to be a pandemic-resilient asset class?
- » How has it fared compared to other private assets and public markets?
- » Rise of ESG engagement in private debt - has this contributed to increasing investor appetite?
- » What position will it hold in investor portfolios in the months to come?



What role can private credit providers play in helping companies integrate ESG and sustainability?

- » Assessing the transition from an exclusion-based to a more sophisticated engagement-based model when it comes to ESG metrics
- » ESG-linked margin ratchets, basis point models and other emerging formulas for future success in sustainability
- » Impact of increased regulation, including the EU's Sustainable Finance Disclosure Regulation (SFDR)

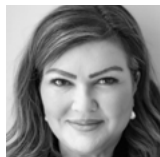


View of the world: how different regions are prospering and why Asia-Pacific is in the spotlight

- » Assessing product availability across different regions when it comes to debt funds
- » The attraction of Asia-Pacific - why this debt market is flourishing despite ongoing Covid struggles
- » Factoring emerging markets into debt portfolio considerations

[View full agenda ↻](#)

Highlighted speakers



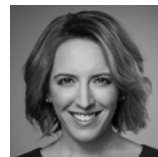
Natalie Breen

Global Head of Strategic
Growth
Sanne Group



Rikke Kjær Nielsen

Partner
EQT



Joanna Reiss

Partner and Co-lead of
Impact, Private Equity
**Apollo Global
Management**



Alexandra Farmer

Partner
Kirkland & Ellis



Denise Le Gal

Chair
**Brunel Pension
Partnership**



Joana Rocha Scaff

Head of Europe Private
Equity
Neuberger Berman



Sarah Farrell

Head of Private Equity
Europe and Asia
Allstate Investments



Teia Merring

Investment Director –
Private Equity
USS



Carine Schneider

President
Astellra



Karin Hyland

Senior Investment Director
**Aberdeen Standard
Investments**



Aranpreet

Randhawa
Partner
Proskauer



Emma Watford

Partner
Bridgepoint



**Gwenola
Chambon**

CEO - Founding Partner
Vauban Infrastructure



Tara Davies

Partner, Global Head of
Core Infrastructure, and
Co-Head of European
Infrastructure
KKR



Casey Forester

Director, Fundraising
Specialist (Private
Equity/Infrastructure)
**Impax Asset
Management**



Kriti Madan

Vice President
Northleaf Capital Partners



Amy Mahon

Partner
**Simpson Thacher
& Bartlett**



Laurie Mahon

Vice-Chair, US
Investment Banking,
Global Investment
Banking
CIBC Capital Markets



Dan McCarthy

CEO & Practice
Leader, Americas
One Search



Roopa Murphy

Partner Infrastructure
Debt, Europe
AMP Capital



Phil Peters

Global Head of Client
Solutions Group
**Macquarie Asset
Management**



Helen Price

Director, Infrastructure.
**InfraRed Capital
Partners**



Patricia Rodrigues

Member of Investment
Committee
GLIL Infrastructure



**Dr Angelika
Schöchlin**

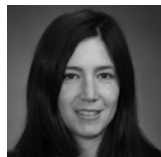
Partner
**Antin Infrastructure
Partners**

Highlighted speakers



Christina Djambazca

Analyst, Real Estate;
Product Lead - Transition
Risk
GRESB



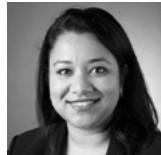
Ana Estrada

Managing Director Real
Estate Investing
**Goldman Sachs Asset
Management**



Natalie Howard

Head of Real Estate Debt
Schroders



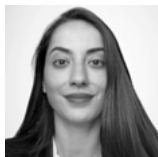
Sabina Kalyan

Global Head of Real Assets
Research
CBRE Global Investors



Martina Malone

Managing Director, Global
Head of Capital Raising
Prologis



Roujin Mansour

Senior Investment
Analyst
AustralianSuper



**Joanne
McNamara**

EVP - Europe and
Asia Pacific
Oxford Properties



Vanessa Muscara

Head of Research &
Strategy
Europa Capital



**Gilda Perez-
Alvarado**

Global CEO
**JLL Hotels &
Hospitality**



Nisha Raghavan

Chief Financial Officer
EQT



Sylvia Slaughter

Senior Director - Fund
Management
GLP



Bronny Wilson

Regional Head UK and
Ireland
Equiem

Highlighted speakers

Highlighted speakers



Kirsten Bode

Co-Head of Pan-European Private Debt
Muzinich and Co



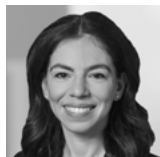
Daniela Jönsson

Managing Director
Ares Management



Lorna Robertson

Head of Funds
Connection Capital



Emily Brown

Partner
Ropes & Gray



Kristina Matthews

Managing Director,
Head of Investor
Relations & ESG
**Brightwood Capital
Advisors**



Sonia Rocher

Head of Private Debt
Research and Execution
BlackRock



Alesia Dawidowicz

Managing Director, Private
Debt and Hedge Funds
StepStone Group



Lucie Mixeras

Associate Director
IFM Investors



Natalia Tsitoura

Managing Director,
Head of European
Private Debt
**Apollo Management
International**



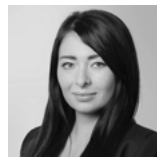
Benoît Durteste

Chief Investment Officer and
Chief Executive Officer
ICG



Adriana Oller

Founder & Partner
Resilience Partners



Harriet West

Associate
Proskauer

Connect with the private markets community

Current attendees include:

- | | | | |
|---|-----------------------------------|--|---|
| » Actis | » EQT | » Massmutual | Fund |
| » Allianz Capital Partners | » European Investment Fund | » MEAG | » PSP Investments |
| » Allstate Investments | » GIC | » MetLife Investments | » RNIB Royal National Institute for the Blind |
| » Alte Leipziger Hallesche Versicherung | » Greater Manchester Pension Fund | » Montana Capital Partners | » Ropes & Gray |
| » AMP Capital | » IFM Investors | » Motive Partners | » Sanne Group |
| » Aquila Capital | » Infracapital | » MUFG | » Simpson Thacher |
| » Border to Coast Pensions Partnership | » Infranode | » New End | » Sunsuper |
| » Bridgepoint | » Investec | » Northleaf Capital Partners | » Thor Equities |
| » CDC Group | » Japan Post Bank | » NYSNA Pension Plan and Benefits Fund | » Triago |
| » CIBC | » Kirkland & Ellis | » Orion Capital Managers | » United Nations Joint Staff Pension Fund |
| » CIL | » KKR | » ORIX Life Insurance | » USS Investment Management |
| » Cordet Capital Partners | » Lexington Partners | » Owl Rock | » Vanderbilt University |
| » CPPIB | » Local Pensions Partnership | » Pension Protection Fund | » Vauban Infrastructure |
| » Desjardins Pension Group | » Lockton Companies | » Proskauer | » Wimmer Family Office |
| » EBRD | » Macquarie | » Prudential Staff Pension | » WTS Deutschland |

DOWNLOAD THE SAMPLE ATTENDEE LIST ↗

Sponsors

Principal sponsor



Lead sponsors



Sponsors

Sponsors



For more information on sponsorship opportunities still available contact Christopher Wagland | chris.w@peimedia.com | +44 (0) 207 566 5475

Make a sponsorship enquiry ↻

Private Equity
International

Women in Private Markets Summit 2021

**Book your place and join the worlds'
leading diversity event for private markets**

Get full summit access and attend all four forums.

BOOK NOW ➞

Institutional investors may be eligible for a complimentary place.

Complete the form for more information ➞