

Private Equity
International

Women in Private Markets Summit 2021

1-2 December | Royal Lancaster Hotel, London

Keeping diversity at the top of the agenda
1 Summit. 4 Forums.

PEI

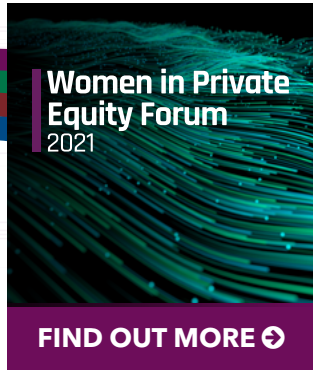
Contents

- » Event overview →
- » Networking opportunities →
- » Keynote speaker →
- » Forum highlights →
- » Featured speakers →
- » Connect with the community →
- » Sponsors →
- » Book now →



1 SUMMIT. 4 FORUMS.

Back in London for 2021, bringing together **women across private equity, infrastructure, private debt and real estate.**



Women in Private Equity Forum
2021

FIND OUT MORE ↻

The banner features a background of glowing green and blue lines, suggesting data or technology.



Women in Infrastructure Forum
2021

FIND OUT MORE ↻

The banner features a background image of wind turbines in a field.



Women in Real Estate Forum
2021

FIND OUT MORE ↻

The banner features a background image of modern skyscrapers.



Women in Private Debt Forum
2021

FIND OUT MORE ↻

The banner features a background of a network of glowing blue and white nodes.

Networking opportunities available across the summit

Returning to London in its 8th year

Join the summit in-person this December in London and start diversity conversations with a global community through the many networking opportunities we have on offer.

1

Meet in-person once again

Connect with your peers at interactive workshops, networking breaks, an evening drinks reception, roundtable discussions and invite-only breakfasts. The agenda is designed to bring attendees together and presents more networking opportunities than ever before.

2

Build a valuable private markets network

Benefit from our expansive cross-asset class investor and fund manager community who will be in attendance throughout the summit. Build lasting relationships and compare best practices with your peers.

3

Private messaging

Message other attendees throughout your 6-month online platform access. Use advanced filtering to identify the people you want to meet at the event. Reach out, network, and make valuable connections at a time that suits everyone.

[DOWNLOAD THE SAMPLE ATTENDEE LIST](#)

KEYNOTE

Cheryl Potter

Chair
Level 20

Building a career as a dealmaker in private equity

Level 20's Chair, Cheryl Potter will discuss why private equity still struggles to retain diverse talent. Sharing her learnings from a career spent on the deal team, how the industry can attract and retain more women, and the wider role of Level 20.



Featured sessions at

Women in Private Equity Forum 2021



How well positioned is private equity to turn the crisis into an opportunity?

- » How important is private equity in getting the economy going again?
- » To what extent have types of investment changed in the past 18 months?
- » Dealing with parts of the portfolio which are still constrained by the pandemic



Why growth equity and venture capital are growing rapidly worldwide

- » Considering the differences and similarities of the two strategies
- » What does the movement of private equity heavyweights into the space mean for the market?
- » Are European investors getting more comfortable with venture capital and growth?



Emerging managers: what it takes to raise a first-time fund

- » Tapping investor networks and how to creatively approach newer sources of capital
- » Hustling the best deals or capital raising: which one to prioritise?
- » Team build-out: what should be the founding team's key priorities?

[View full agenda ↻](#)

Featured sessions at

Women in Infrastructure Forum 2021



Digital infrastructure: finding value in an ultra-competitive market

- » Areas of focus; sub-sector, strategy, and asset type
- » Competition for larger (\$1bn+) vs. mid-market transactions
- » Assessing exit strategies and hold periods for digital assets



Defining social infrastructure and where private capital fits into the ecosystem

- » Does a narrow or broad definition of social work best?
- » Why services constitute an important part of the sector
- » Differentiating social infrastructure from other asset classes



Opportunities in the energy transition as the world aims for net-zero

- » What is a 'fair' return for renewables and is there further yield compression to go?
- » Will capital allocations to renewables and the energy transition continue to increase?
- » Are funds getting crowded out of some parts of the market, and how can you differentiate?

[View full agenda](#) ↻

Featured sessions at

Women in Real Estate Forum 2021



Real estate demand post-pandemic: finding opportunities in a dislocated market

- » Digesting impact macro-trends on real estate investing in the coming decade
- » Repositioning portfolios towards on alternatives and niche products
- » The relative attractiveness of debt investments and its wider role in investors' portfolios



The future of offices in a post-pandemic world

- » Overview of the pandemic's impact on aggregate office demand
- » The hotelization trend in taking an operational approach to office assets and what this means in practice
- » Alternative uses for sub-prime assets such as residential and the economics of repurposing assets



Why investors are flooding into life sciences

- » Breakdown of the fundamentals driving interest and capital to life sciences
- » Tenant profile and landscape of opportunities across regions
- » How do investors position themselves to find the right opportunity or next significant location?

[View full agenda ↻](#)

Featured sessions at

Women in Private Debt Forum 2021



How has private debt fared in comparison with other investment strategies in the past few months?

- » Why has private debt proven to be a pandemic-resilient asset class?
- » How has it fared compared to other private assets and public markets?
- » Rise of ESG engagement in private debt - has this contributed to increasing investor appetite?
- » What position will it hold in investor portfolios in the months to come?



What role can private credit providers play in helping companies integrate ESG and sustainability?

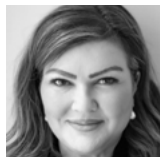
- » Assessing the transition from an exclusion-based to a more sophisticated engagement-based model when it comes to ESG metrics
- » ESG-linked margin ratchets, basis point models and other emerging formulas for future success in sustainability
- » Impact of increased regulation, including the EU's Sustainable Finance Disclosure Regulation (SFDR)



View of the world: how different regions are prospering and why Asia-Pacific is in the spotlight

- » Assessing product availability across different regions when it comes to debt funds
- » The attraction of Asia-Pacific - why this debt market is flourishing despite ongoing Covid struggles
- » Factoring emerging markets into debt portfolio considerations

[View full agenda ↻](#)



Natalie Breen
Global Head of Strategic
Growth
Sanne Group



Alexandra Farmer
Partner
Kirkland & Ellis



Sarah Farrell
Head of Private Equity
Europe and Asia
Allstate Investments



Karin Hyland
Senior Investment Director
**Aberdeen Standard
Investments**



Rikke Kjær Nielsen
Partner
EQT



Denise Le Gal
Chair
**Brunel Pension
Partnership**



Teia Merring
Investment Director -
Private Equity
USS



**Aranpreet
Randhawa**
Partner
Proskauer



Joanna Reiss
Partner and Co-lead of
Impact, Private Equity
**Apollo Global
Management**



Joana Rocha Scaff
Head of Europe Private
Equity
Neuberger Berman



Carine Schneider
President
Astellra



Emma Watford
Partner
Bridgepoint

Highlighted speakers

**Women in
Infrastructure Forum**
2021



Annette Bannister
Head of European
Infrastructure and Project
Finance
**Metlife Investment
Management**



Floortje Brouwers
Senior Vice President
GIC



Gwenola Chambon
CEO - Founding Partner
Vauban Infrastructure



Tara Davies
Partner, Global Head of Core
Infrastructure, and Co-Head
of European Infrastructure
KKR



Irina Frolova
Head Asset Management
Infrastructure
PGGM



Kriti Madan
Vice President
**Northleaf Capital
Partners**



Amy Mahon
Partner
**Simpson Thacher
& Bartlett**



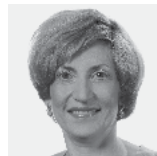
Laurie Mahon
Vice-Chair, US
Investment Banking,
Global Investment
Banking
CIBC Capital Markets



Roopa Murphy
Partner Infrastructure
Debt, Europe
AMP Capital



Patricia Rodrigues
Member of Investment
Committee
GLIL Infrastructure



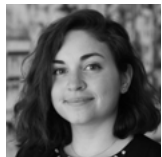
Albena Vassileva
Executive Director
IFM Investors



Deborah Zurkow
Global Head of
Investments
AllianzGI

Highlighted speakers

Women in Real Estate Forum
2021



Christina Djambazca
Analyst, Real Estate;
Product Lead - Transition Risk
GRESB



Beatrice Dupont
Partner
ARA Venn



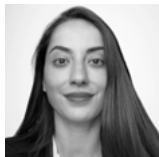
Natalie Howard
Head of Real Estate Debt
Schroders



Sabina Kalyan
Global Head of Real Assets Research
CBRE Global Investors



Martina Malone
Managing Director, Global
Head of Capital Raising
Prologis



Roujin Mansour
Senior Investment Analyst
AustralianSuper



Joanne McNamara
EVP - Europe and Asia Pacific
Oxford Properties



Vanessa Muscara
Head of Research & Strategy
Europa Capital



Gilda Perez-Alvarado
Global CEO
JLL Hotels & Hospitality



Nisha Raghavan
Chief Financial Officer
EQT



Sylvia Slaughter
Senior Director - Fund Management
GLP



Bronny Wilson
Regional Head UK and Ireland
Equiem

Highlighted speakers

Highlighted speakers



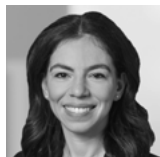
Kirsten Bode
Co-Head of Pan-European Private Debt
Muzinich and Co



Daniela Jönsson
Managing Director
Ares Management



Lorna Robertson
Head of Funds
Connection Capital



Emily Brown
Partner
Ropes & Gray



Kristina Matthews
Managing Director,
Head of Investor
Relations & ESG
**Brightwood Capital
Advisors**



Sonia Rocher
Head of Private Debt
Research and Execution
BlackRock



Alesia Dawidowicz
Managing Director, Private
Debt and Hedge Funds
StepStone Group



Lucie Mixeras
Associate Director
IFM Investors



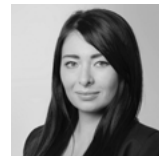
Natalia Tsitoura
Managing Director,
Head of European
Private Debt
**Apollo Management
International**



Benoît Durteste
Chief Investment Officer and
Chief Executive Officer
ICG



Adriana Oller
Founder & Partner
Resilience Partners



Harriet West
Associate
Proskauer

Connect with the private markets community

Current attendees include:

- » Actis
- » Allianz Capital Partners
- » Allstate Investments
- » Alte Leipziger Hallesche Versicherung
- » AMP Capital
- » Aquila Capital
- » Astrella
- » Border to Coast Pensions Partnership
- » CPPIB
- » CDC Group
- » Cerberus Capital Management
- » CIBC
- » CIL
- » Cordet Capital Partners
- » CPP Investments
- » Desjardins Pension Group
- » EBRD
- » European Investment Fund
- » GIC
- » Greater Manchester Pension Fund
- » Henderson Park Capital Partners
- » Infracapital
- » Infranode
- » Investec
- » Japan Post Bank
- » KKR
- » Lexington Partners
- » Local Pensions Partnership
- » Lockton Companies
- » Massmutual
- » MEAG
- » MetLife Investments
- » Montana Capital Partners
- » Motive Partners
- » MUFG
- » New End
- » Northleaf Capital Partners
- » NYSNA Pension Plan and Benefits Fund
- » Orion Capital Managers
- » ORIX Life Insurance
- » Owl Rock
- » Pension Protection Fund
- » Polar Structure
- » Prudential Staff Pension Fund
- » PSP Investments
- » QuadReal Property Group
- » RNIB Royal National Institute for the Blind
- » RoundShield Partners
- » Signal Iduna Asset Management
- » Sunsuper
- » Thor Equities
- » Triago
- » United Nations Joint Staff Pension Fund
- » USS Investment Management
- » Vanderbilt University
- » Whitehelm Capital
- » Wimmer Family Office
- » WTS Deutschland
- » Zouk Capital

[DOWNLOAD THE SAMPLE ATTENDEE LIST ↗](#)

Sponsors

Lead sponsors

AMPCAPITAL 



EQT

ifm
investors

KIRKLAND & ELLIS

Northleaf

Proskauer 

sanne

 VAUBAN
INFRASTRUCTURE PARTNERS

Sponsors



ROPES & GRAY

Simpson
Thacher

For more information on sponsorship opportunities still available contact Christopher Wagland | chris.w@peimedia.com | +44 (0) 207 566 5475

[Make a sponsorship enquiry](#) 

Private Equity
International

Women in Private Markets Summit 2021

Book by 8 October and save £150.

Get full summit access and attend all four forums.

BOOK NOW ↻

Institutional investors may be eligible for a complimentary place.

Please contact katherine.w@peimedia.com for more information.