

Private Equity
International

Operating Partners Human Capital Forum

Virtual Experience

May 13, 2021 | Available anywhere
Eastern Time (ET)

Driving human capital as a key value creation lever

PEI

To learn more, visit:

peievents.com/en/event/human-capital-forum/

Contents

- » [Agenda highlights](#) →
- » [Speakers](#) →
- » [Networking opportunities](#) →
- » [What is Operating Partners All Access?](#) →
- » [Membership calendar](#) →
- » [Membership and pricing](#) →
- » [Sponsors](#) →

Agenda Highlights

Plenary sessions

- ✓ Human capital best practices across the entire investment lifecycle
- ✓ Recruiting CEOs for a post pandemic economy
- ✓ Training and development for the modern CFO: setting CFOs up for success
- ✓ Next generation commercial leadership - how the game has changed
- ✓ The Future of work: top challenges and opportunities for HR teams in switching to a remote-first work environment

Human capital operating partners think tank

One hour long invitation-only think tank for full-time PE and VC operating partners and talent partners. This closed-door virtual room will allow you to learn and share best practices in human capital, talent management and recruiting operations.

[View full agenda](#) ↗

Agenda Highlights

[View full agenda](#) ↗

Breakout session I

1:40pm



Track 1 + Track 2

Human capital due diligence—the missing ingredient in pre-transaction playbooks



The next level of talent recruitment, retention, and assessment: best practices in 2021 and beyond



Track 3 + Track 4

Human capital M&A integration: critical steps for PE firms and their portcos



Healthcare costs, COVID and EBITDA: reducing spend through employee engagement



The long journey for diversity: an inside look at private equity initiatives and challenges



Boards: navigating the next normal

Hear from **value creation leaders**

[View speakers](#) ➔



Emily Azevedo
Operating Partner,
Talent
Mainsail Partners



Neel Bhatia
Operating Partner,
Talent and ESG
**Arcline Investment
Management**



Andy Caine
Partner, Human Capital
**Frazier
Healthcare Partners**



Kelly Carlson
Managing Director,
Head of Talent
STG Partners



Coley Florance
Head of Talent
Spectrum Equity



Michael Frain
Senior Vice President,
Shared Services
Warburg Pincus



Ben Holzemer
Partner, Global Head of
Human Capital
TPG Global



Natalie Ings
Managing Director,
Portfolio Solutions
Lightyear Capital



Hannah Johnson
Head of Human
Resources
Thoma Bravo



Abhishek Kapur
Managing Director
KKR Capstone

Hear from **value creation leaders**

[View speakers](#) ➔



Christopher Kim
Senior Vice President
Platinum Equity



Alice Mann
Human Capital
Operating Partner
**Blue Wolf
Capital Partners**



Steven Maxwell
Senior Vice President,
Portfolio Human Capital
Audax Group



Kate Migliaro
Principal,
Talent Management and
Organizational Effectiveness
**Apollo Global
Management**



Melissa Mounce
Managing Director,
Leadership Talent
GTCR



Ann Ruble
Operating Partner
Two Sigma Impact



Katie Solomon
Managing Director,
Talent Management
Genstar Capital



Adam Stein
Founding Partner
LightBay Capital



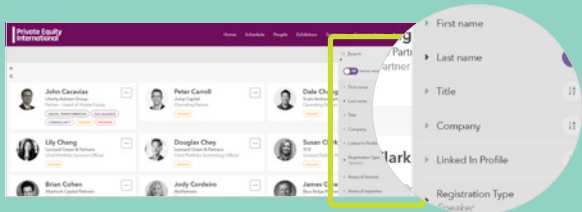
Glenn Stevens
Partner, Talent
Management
**Apollo Global
Management**



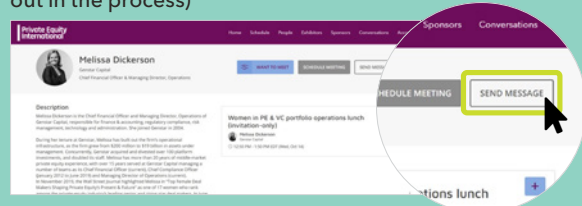
Elizabeth Wallace
Head of Portfolio Talent
Hg

Unlock superior **networking opportunities** with our virtual platform

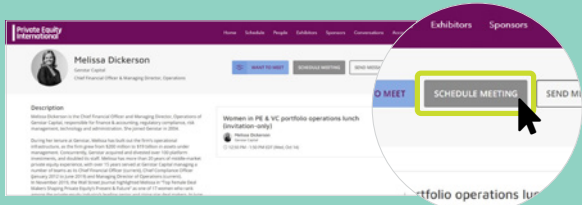
Search other members by name, title, specialization, geography, and areas of interest



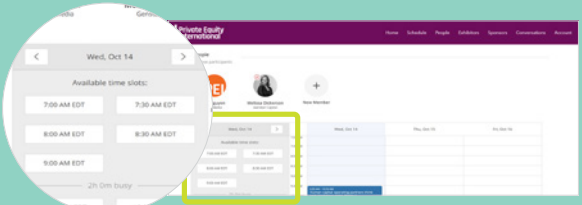
Send a direct message that goes to the recipient's email and platform inboxes (please note no emails are given out in the process)



Schedule a meeting on the platform



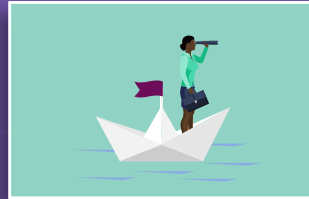
Arrange a meeting at a time that suits you with year-round access to the community list



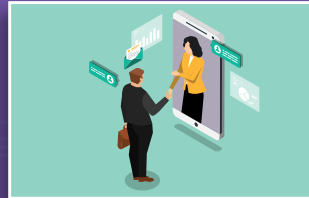
What is **Operating Partners All Access**?

It is a 12-month membership service

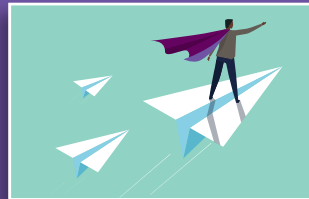
made up of a global community of operating partners. Connect with your peers and learn how to better optimize portfolio company performance. Exchange ideas, best practices and participate in interactive discussions.



Participate in monthly Forums, Deep Dives, and sessions to advance your value creation efforts

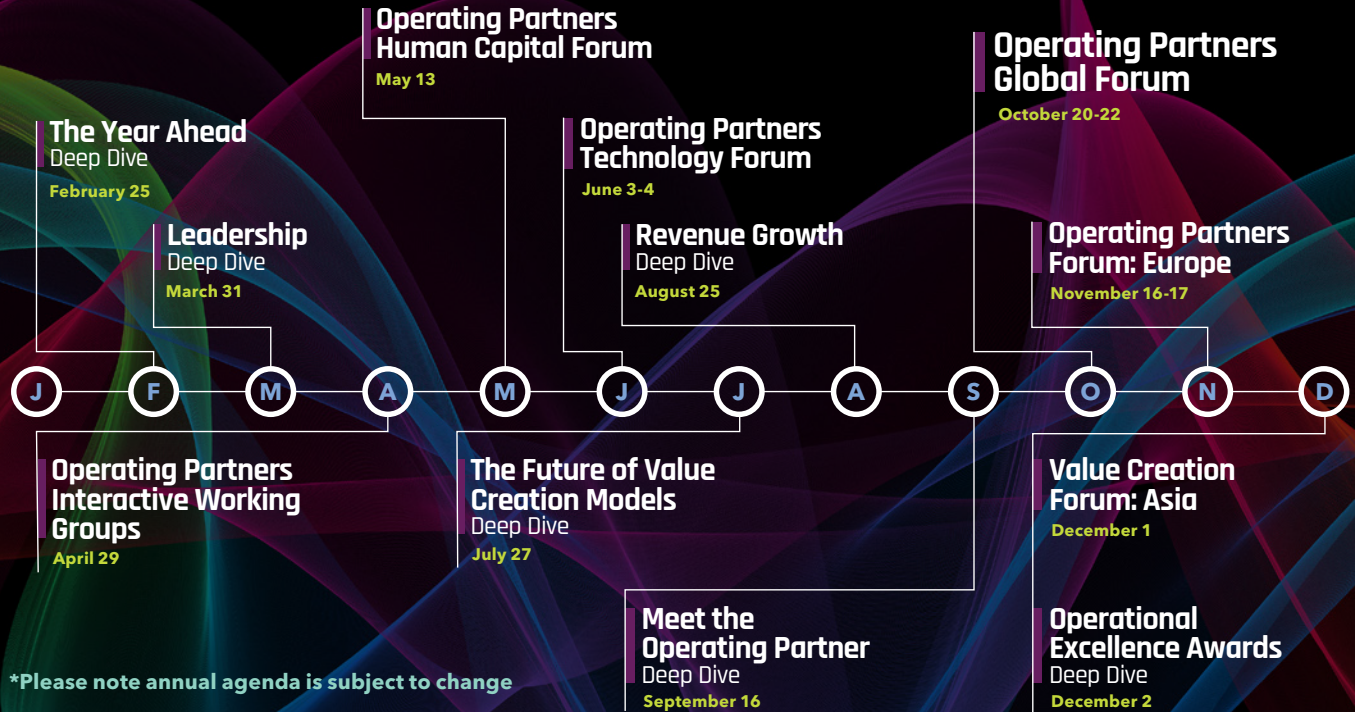


Watch sessions at any time; watch live or catch-up on demand throughout the year



Send private messages, schedule meetings or continue the conversation offline with community members

What does a **year's membership** look like?



*Please note annual agenda is subject to change

Learn more about Operating Partners All Access memberships

The Human Capital Forum is included in your Operating Partners All Access membership. A membership includes 12 month access to community networking, attendance at all virtual events, one in-person event, plus all the monthly content delivered virtually on the platform.

This membership is for in-house portfolio operations, finance, and investment professionals at private equity/venture capital firms, foundations, endowments, public and private pension funds, sovereign wealth funds and fund of funds. More information can be found at peievents.com/en/event/op-all-access/

Single membership:	1 member	\$2,995
Team membership:	2 members	\$5,990
	3 members	\$7,785
	4 members	\$9,180
	5 members	\$9,975
	6 members	\$11,970

Looking to include 7+ in your membership?
Contact Bes Selmani at Bes.s@peimedia.com or +1 212 796 8339

Interested in learning more and previewing the membership platform?

Our team will be happy to assist you.

Request a demo →

For program information:

Marc Mele

Marc.m@peimedia.com

+1 646 581 9295

For sponsorship opportunities:

Lawrence Dvorchik

Lawrence.d@peimedia.com

+1 646-795-3279

For registration questions:

Customer Services

regny@peimedia.com

+1 212-633-1073

Sponsors

[View all sponsors ↗](#)

Platinum

AlixPartners

Sponsors

acertitude.
brilliant people at work®



BLUE RIDGE PARTNERS®
The Revenue Engine



Host publication

**Private Equity
International**

For details on sponsorship opportunities, service providers and/or other solution providers to PE/VC operating partners and private fund managers please contact **Lawrence Dvorchik** at **lawrence.d@peimedia** or call **+1 646 545 4429**