

Private Equity
International

Impact Investor Forum

Virtual Experience 2021

24 - 26 May, BST time zone

**Mobilising private capital for
a more sustainable future**

PEI

Contents

- » [Keynote speaker](#) →
- » [Featured sessions](#) →
- » [Speakers](#) →
- » [Virtual experience](#) →
- » [Networking highlights](#) →
- » [Current attendees](#) →
- » [Sponsors](#) →
- » [Secure your place](#) →



KEYNOTE

The VC Mindset in Tackling Global Challenges

Kate Bingham

Managing Partner

SV Health Investors, and former Chair of UK
Government's Vaccine Taskforce

In May 2020, Kate was appointed Chair of the UK Vaccine Taskforce to lead national efforts to find and manufacture a COVID-19 vaccine. Seven months later, the UK began the world's first mass vaccination programme. Her unique keynote presentation will discuss the advantages of the biotech mindset, and the ability to be nimble and small when addressing global challenges.



Featured sessions



The route to scaling impact: dedicated funds or integration with ESG?

- Discover the different approaches funds are taking to impact and how they believe they will achieve impact at scale
- Debate the role of ESG and impact blending in moving progress forward and what the evolution of these strategies will look like
- Understand the outlook of fund managers and where they are focusing their time and resources

With representatives from **Bridges Fund Management, EQT, Kirkland & Ellis, Nuveen, The Carlyle Group**

Impact methodologies: will measurements reach a financial reporting standard and what to do in the meantime?

- Get an overview of the progress to harmonising impact management and measurement methodologies
- Learn what frameworks leading impact funds are using to demonstrate impact as well as implement continuous improvement
- Listen to a debate on how data, metrics and methodology will develop in the next 5 years as the sector matures

With representatives from **Big Society Capital, Brookfield Asset Management, IFC, Impact Management Project, PwC, SASB**



Featured sessions

Structuring impact to go mainstream with institutional investors

- Get a view across the investor spectrum and understand what matters most
- Debate if impact can, or should, be on parity with returns in importance
- Understand whether pension funds need to adjust to account for impact performance
- Debate whether return concessions are really off the table when assessing impact funds
- Learn what data investors want to see and the frameworks guiding their information requests
- Discuss the risk of a supply-demand imbalance between credible impact investment opportunities and the level of capital chasing impact deals

With representatives from **APG, CalSTRS, New York State Common Retirement Fund, PGGM Investments, Schroders**



Hear from top impact investment experts:



Nicholas Abel
Investment Officer,
Sustainable Investment
& Stewardship
Strategies
CaISTRS



Natalie Adomait
Managing Director
Brookfield



Anita Bhatia
Investment Director,
Endowment Team
**Guy's and St
Thomas' Charity**



Dazzle Bhujwala
Director, Investor
Network
Ceres



Els Boerhof
Founder and Managing
Partner
**Goodwell
Investments**



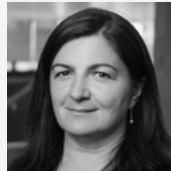
Sabine Chalopin
Power and Renewable
ESG & Impact Director
Denham Capital



Cecilia Chao
Managing Director
**Bain Capital
Double Impact**



Jeff Cohen
Director of Capital
Markets Integration
SASB



Silva Deželan
ESG Director
**Stafford Capital
Partners**



Stéphanie Émond
Chief Impact Officer
FinDev Canada



Martin Ewald
Lead Portfolio Manager,
Impact Investments
**Allianz Global
Investors**



Michele Giddens
Co-CEO
**Bridges Fund
Management**

Hear from top impact investment experts:



Catherine Godschalk
Vice President,
Investments
Calvert Impact Capital



Neil Gregory
Chief Thought
Leadership Officer
IFC



Fredrik Henzler
Co-Head Goods &
Products
Partners Group



Marta Hervás
Investment Director
Arcano Asset Management



Beth Houghton
Partner, Head of Impact
Fund
Palatine



Jane Hughes
Professor of Practice
Simmons University School of Business



Maurice Klaver
Senior Investment
Manager Private Equity
PGGM Investments



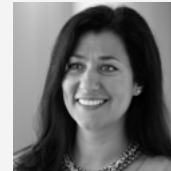
Christina Leijonhufvud
CEO & Co-Founder
BlueMark



Anders Misund
Partner and Head of
Nordics
EQT Partners



Narina Mnatsakanian
Executive Director -
Impact & Sustainable
Investment
Kempen Capital Management



Shami Nissan
Head of Responsible
Investment
Actis



John Onwualu
Managing Director
U.S. International Development Finance Corporation

Hear from top impact investment experts:



Eimear Palmer
Responsible Investing
Officer
**Intermediate
Capital Group**



Aaron Pinnock
Impact Investment
Analyst
**Church
Commissioners for
England**



Olivia Prentice
COO and Head of
Content
**Impact
Management
Project**



**Katharine
Preston**
Vice President-
Sustainable Investing
OMERS



Fabio Ranghino
Head of Strategy &
Sustainability
Ambienta



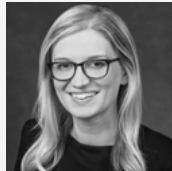
Johanna Raynal
Director of ESG &
Impact
Swedfund



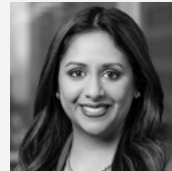
**Elizabeth
Seeger**
Managing Director,
Sustainable Investing
KKR



Andrew Siwo
Director of Sustainable
Investments and
Climate Solutions
**New York
State Common
Retirement Fund**



Megan Starr
Global Head of Impact
Carlyle Group



Rekha Unnithan
Managing Director,
Co-Head of Impact
Investing
Nuveen



**Juho
Uusihakala**
Senior Development
Impact Adviser
Finnfund



**Victor van
Hoorn**
Executive Director
Eurosif

Achieve more at our immersive virtual experience



Secure capital

Connect with over 300 impact investing professionals through interactive roundtables and discussions. Collaborate, share key challenges and discover solutions.



Gain a strategic edge

Exchange best practices with leading impact funds around the world. Benchmark your strategy with the most prominent industry practitioners from the likes of Partners Group, Nuveen, KKR, Carlyle and many more.



Stay connected

The platform will be open for a total of 6 months. Access it 1 month before the event and 5 months after. Maximise your time; begin direct messaging in advance, continue conversations post-event and watch the video content on-demand.

Networking opportunities available throughout the event

1

Pre-event workshops

Connect with other attendees with a similar focus in the interactive workshops the day before the main forum. The roundtable will be hosted by a workshop leader and two speakers who will kick-off the discussion with attendees.

3

Speed-networking sessions

Sign up to join five randomly generated meetings and be matched with those of a similar interest, to quickly expand your network.

2

Private messaging

Message other attendees throughout your 6-month platform access. Use advanced filtering to identify the people you want to meet. Reach out, network, and make valuable connections at a time that suits everyone.

4

6 months access to the community

Attendees have access to our event platform 1 month before the event date and 5 months after.

Login before the event to build your agenda and arrange meetings. The messaging system and recordings of all sessions will then be available for an additional 5 months after the event.

Connect with our global impact investing attendees

Current attendees include:

- » Actis
- » Allianz Capital Partners
- » Allianz Global Investors
- » Ambienta
- » AMP Capital
- » AP6
- » AP7
- » Apax Partners
- » APG Asset Management
- » Arcano Partners
- » Asset Management One
- » AXA
- » BentallGreenOak
- » Big Society Capital
- » BMW Foundation Herbert Quandt
- » Bridges Fund Management
- » Brunel Pension Partnership
- » Buckingham Companies
- » CalSTRS
- » Calvert Impact Capital
- » Capital Safi
- » Capricorn Investment Group
- » Castle Hall
- » CDC Group
- » Christian Super
- » Conduit Capital
- » Counselrock Partners
- » CPP Investment Board
- » Dementia Discovery Fund
- » Derigo
- » EBRD
- » EIF
- » Esmee Fairbairn Foundation
- » European Commission
- » European Investment Bank
- » Fondation
- » Fund Our Future
- » Glenmede
- » Hg
- » HSBC Bank
- » Indigram Labs Foundation
- » Julius Baer
- » Kuria Foundation for Social Enterprise
- » Larry Ellison Foundation
- » Macarthur Foundation
- » Marwitz Family Office
- » MassMutual
- » Merseyside Pension Fund
- » NEST - National Employment Savings Trust
- » Nordea
- » North Sky Capital
- » Oaktree Capital Management
- » OMERS
- » PGGM
- » Small Foundation
- » Stepstone Group
- » Temasek
- » Triodos Investment Management
- » Tufts University
- » UNIDO
- » Wafra
- » Wimmer Family Office
- » Working For Change

Sponsors

Lead sponsors

KIRKLAND & ELLIS



Premier sponsor



Sponsors



Brookfield



goodwell
invest with impact



A Manulife Investment Management Company

nuveen

A TIAA Company

Schroders



Supporting partner



Creating Markets, Creating Opportunities

Media partners



For more information on sponsorship opportunities still available contact Christopher Wagland | chris.w@peimedia.com | +44 (0) 207 566 5475

Private Equity
International

Impact Investor Forum

Virtual Experience 2021

**Join the most influential
impact investing
community today.**

[BOOK YOUR PLACE NOW](#) 