

**Private Equity
International**

Responsible Investment Forum New York 2020

March 4-5 | Convene, 730 Third Ave

**Effectively integrating ESG to
create sustainable value**

Co-host



To register visit:
privateequityinternational.com/rifny



Ada T. Arevalo
Chief Impact Officer
Alliant Strategic Investments



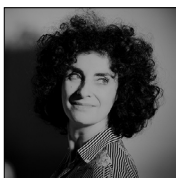
Stephanie Campbell
General Partner
The Artemis Fund



Michael T. Cappucci
Senior Vice President,
Compliance and Sustainable
Investing
Harvard Management
Company, Inc.



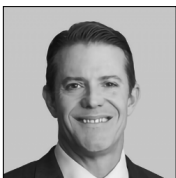
Lisa Davis
Executive Director and
Portfolio Manager, Impact
Investing
PGIM Real Estate



Sophie Flak
CSR and Digital Director
Eurazeo



Adam Fless
Managing Director, Portfolio
Excellence
Paine Schwartz



Brian Good
Senior Managing Director
and Co-head of Tradable
Credit
First Eagle Alternative Credit



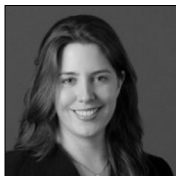
Michael Hall
Sustainability Manager
Development
PartnersInternational (DPI)



Frances Higgins
General Partner
WCAS



Inna Khidekel
Partner, Capital Markets
Bridge Investment Group



Emily S. Kreps
Head of Investor Initiatives
CDP North America



Anna Murray
Vice President, Sustainable
Investing
BentallGreenOak

For a full list of speakers visit: privateequityinternational.com/rifny



Jeff Pentland
Managing Director
Northleaf Capital Partners



Sanaz Raczynski
Managing Director, Head
of Sustainability
Nuveen



Leela Ramnath
Director of ESG
Warburg Pincus



Adam Reinmann
Managing Director, CEO of
Wendel North America
Wendel



Candice Richards
Compliance Officer
MidOcean Partners



Abrielle Rosenthal
Managing Director, Chief
Compliance Officer and
Chief Human Resources
Officer
**TowerBrook Capital
Partners LP**



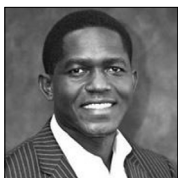
David Russell
Head of Responsible
Investment
**USS Investment
Management Ltd**



Elizabeth Seeger
Director, Sustainable
Investing
KKR



Jennifer Signori
Senior Vice President, ESG
and Impact Investing
Neuberger Berman



Andrew Siwo
Director of Sustainable
Investments and Climate
Solutions
**New York State Common
Retirement Fund**



Megan Starr
Principal and Head of
Impact
The Carlyle Group



Jemma Wolfe
Head of Launch With GS
Goldman Sachs

For a full list of speakers visit: privateequityinternational.com/rifny

Wednesday, March 4

- » LP roundtable
- » Impact investing
- » ESG data
- » Impact Investing: How to participate in this emerging investing opportunity
- » Breakout sessions:
 - Track A: Responsible investing for real estate investors: developing underserved areas
 - Track B: ESG in private debt and responsible lending
 - Track C: Benchmarking infrastructure for ESG performance
- » ESG programs: From policy to integration

Thursday, March 5

- » Corporate governance and board diversity
- » An emerging mandate: ESG reporting
- » Breakout sessions:
 - Track A: Responsible agriculture investment strategies
 - Track B: ESG challenges in healthcare
- » Climate change

For **program information** contact: **Zakira Ralling** at +1 646 545 3321 and zakira.r@peimedia.com.





Alison Fenton-Willock
SVP and Global Head of
ESG
Blackstone



Robert L. Greene
President & CEO
**National Association of
Investment Companies
(NAIC)**



Ken Mehlman
Member and Global Head
of Public Affairs
KKR



Suzanne Tavill
Partner & Global Head of
ESG
StepStone Group

Connect with the leaders in ESG

Network with **200+** institutional investors, fund managers and associations to discuss why, when, and how your firm should be implementing an effective ESG strategy. This year's Forum features two networking think tank breakfasts and five dedicated breakout sessions.

Kickstart your ESG program

Backed by PEI's editorial team, the Forum stays at the forefront of covering the growth of ESG in North American private equity. Join us to access this exclusive content.

- Alaska Permanent Fund Corporation
- Altman Foundation
- APG Asset Management
- Barings
- Beamonte Investments
- Calvert Impact Capital Inc
- Capricorn Investment Group LLC
- City National Rochdale
- Crimson Impact Investments
- Employees Retirement System of Texas
- Evansco LLC
- Ford Foundation
- Gatewood Capital Partners
- GIC Private Limited
- Guggenheim
- Investments
- IBEW Pension Benefit Fund
- International Finance Corporation (IFC)
- Investure LLC
- Korea Post
- Manulife
- Mark Weisdorf Associates
- MassMutual
- Mubadala Investment Company
- Nippon Life Global Investors
- Nomura
- Nuveen
- Office Of The Comptroller Of The City Of New York
- OPIC
- PSP Investments
- SBP Management
- Sen Family Office
- Sinai Bertelsen Group
- State of New Jersey Division of Investments
- Temasek International Europe Limited
- The City of New York, Finance
- The International Development Finance Corporation
- The Joint Industry Board of the Electrical Industry
- The Rockefeller University
- University Of Virginia Investment Management Company (UVIMCO)
- Wafra Inc
- Wespeth Investment Management



"The Responsible Investment Forum New York is a must-attend event for those interested in sustainability, which should be all private equity investors."

Christopher Romano,
ATL Partners

Co-host



Founding ESG sponsor



Lead sponsor



Bright ideas. Sustainable change.

Sponsor



BRIDGE
HOUSE
ADVISORS
A BETTER ENVIRONMENT FOR BUSINESS



KKR



PAINE SCHWARTZ
PARTNERS
SUSTAINABLE FOOD CHAIN INVESTING



Ridgewood
Infrastructure



TPG

Supporting associations



Host publication



For **sponsorship information** contact: **Tyler Mitchell** at
+1 646-795-3279 and tyler.m@peimedia.com.

Pricing

Registration type	Full price
General delegate	\$2,595
PRI member*	\$1,995
Service provider	\$3,995
Qualified investor	Complimentary

*Current PRI signatories are eligible for a special rate. Confirmation of a discounted pass is subject to the review and approval of the event organizer. Please note this rate cannot be combined with any additional discounts.

Registration

✉ regny@peimedia.com

☎ +1 212 633 1073

💻 privateequityinternational.com/rifny

Event venue

Convene, 730 Third Ave, New York, NY 10017

Hotel accommodations

The Benjamin Hotel
125 East 50th Street,
New York, NY 10022



30% Recycled