

People, context and reinvention -  
a layered approach to creating a sense  
of place

Tim Bowder-Ridger

CONRAN+  
PARTNERS

We are a lifestyle brand



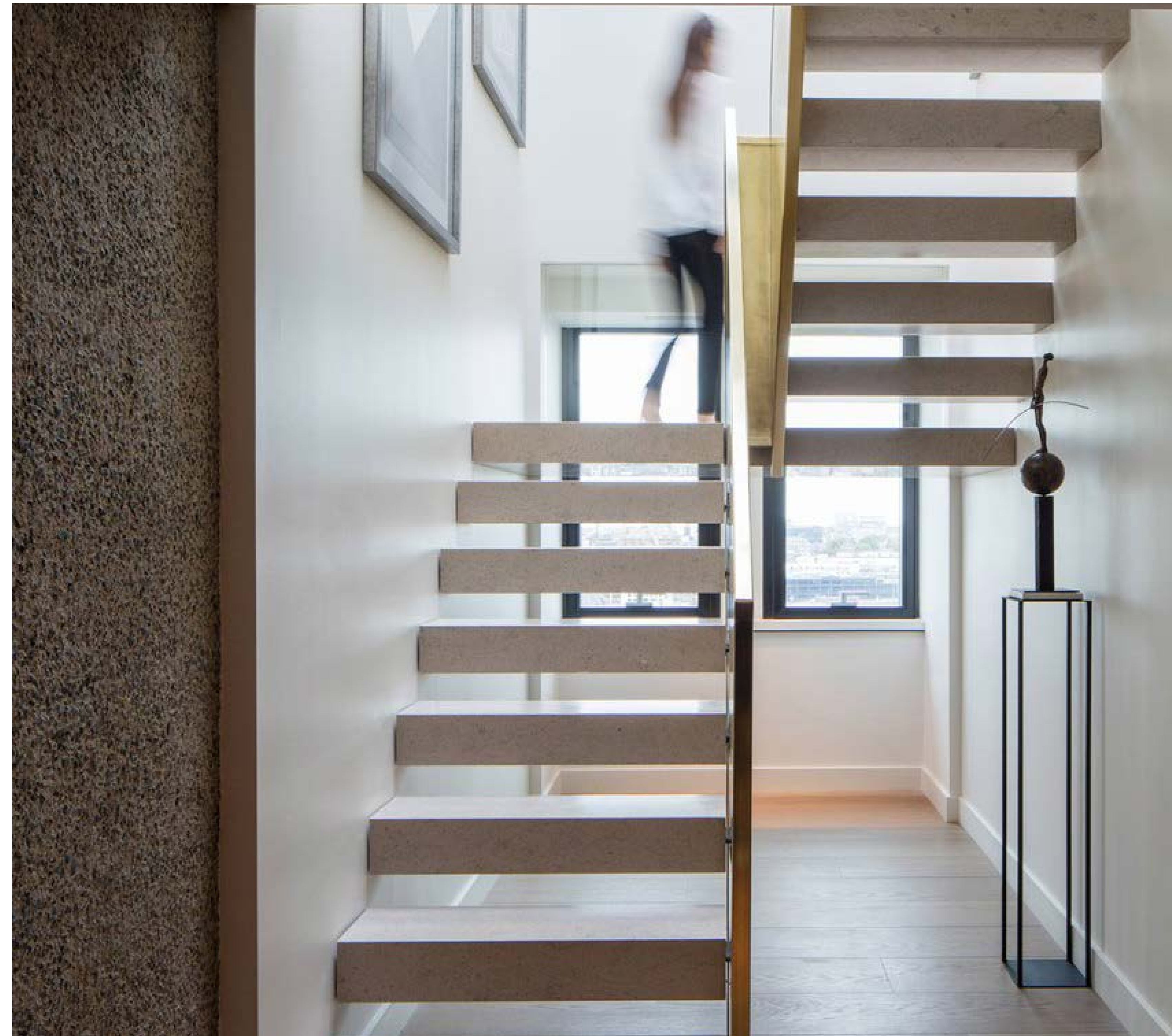
“Good design improves the quality of people’s lives”

*Terence Conran*

# The Team



We are a collaborative design studio working across architecture and interior design



We work across all sectors



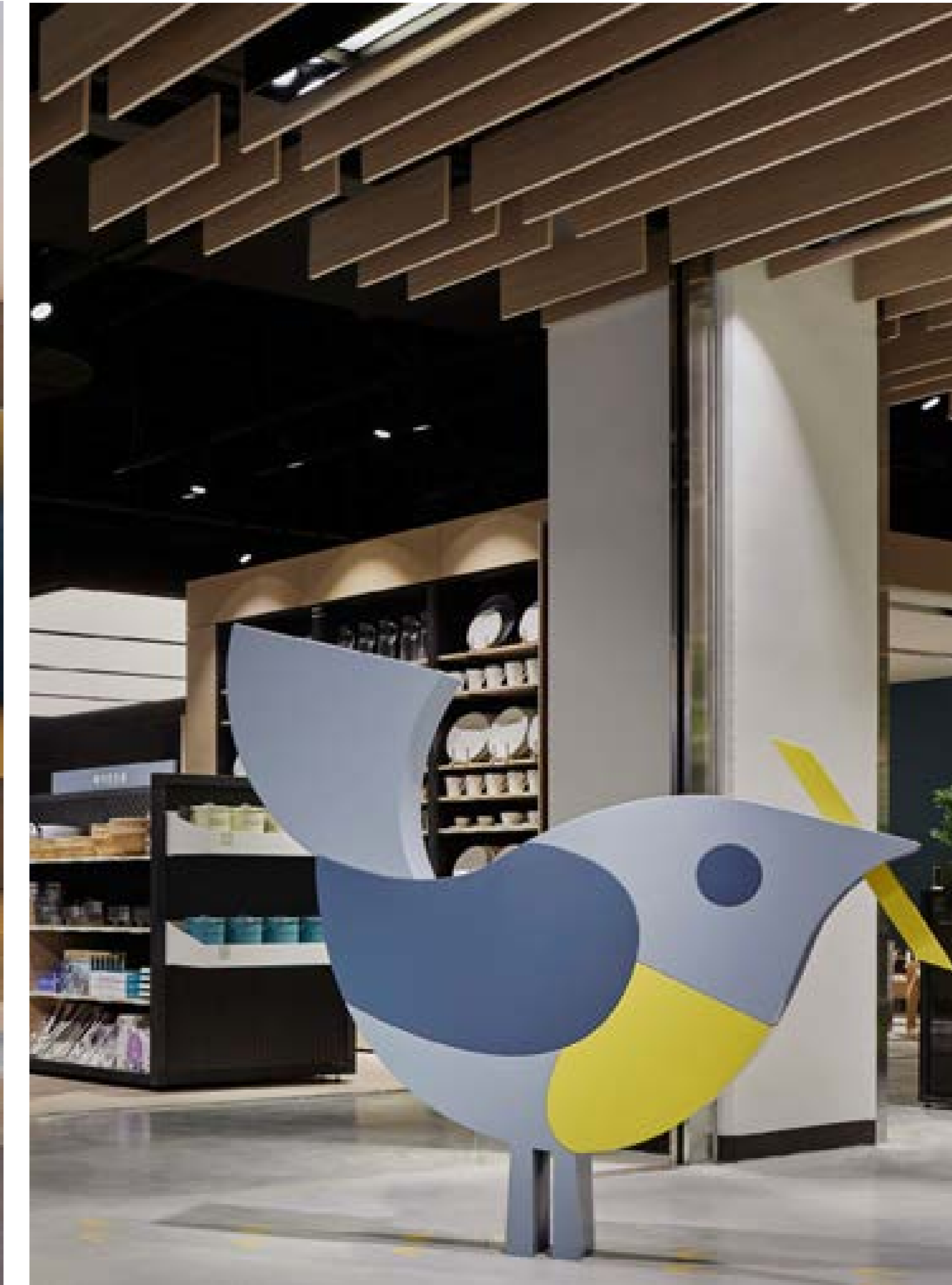
STAY



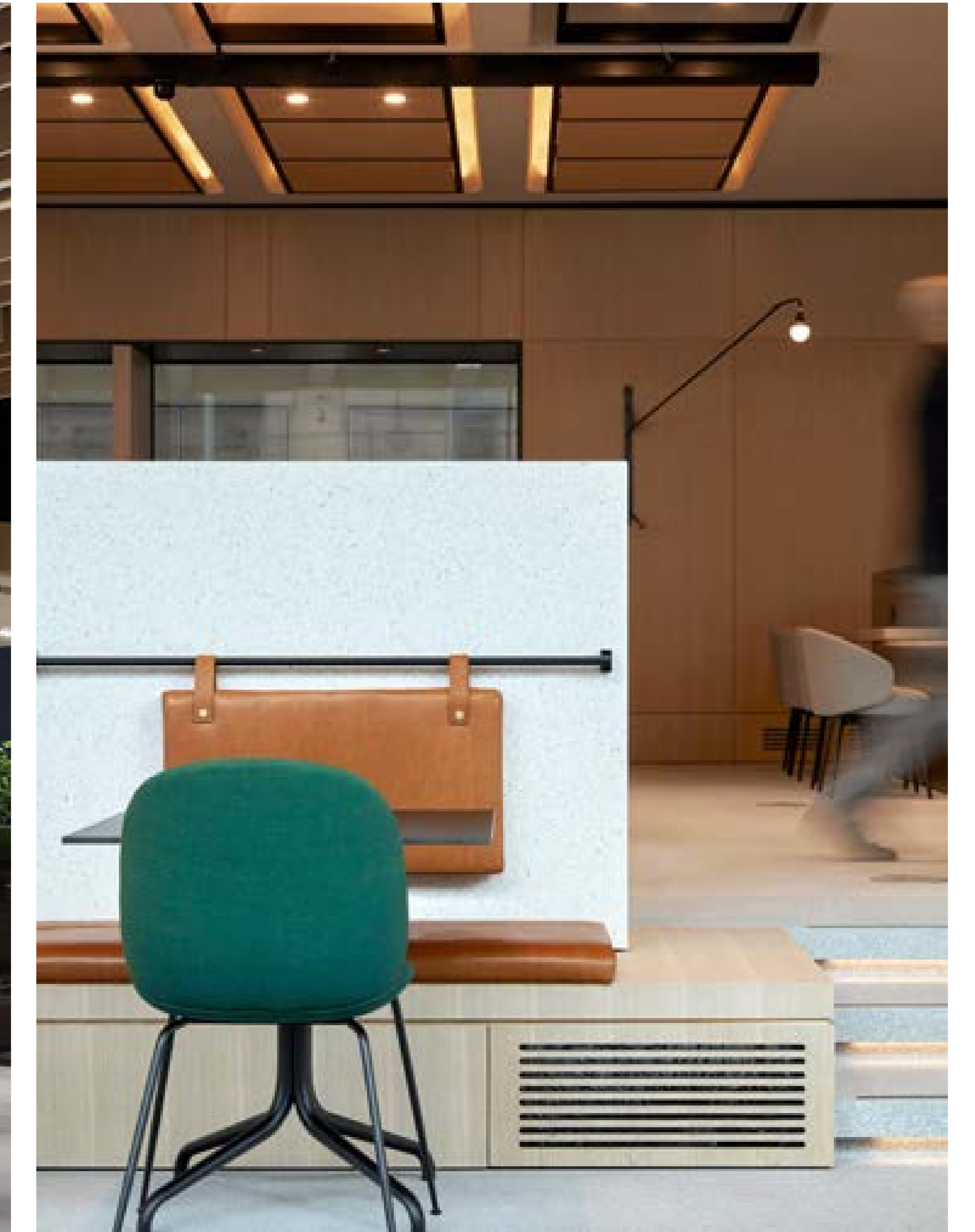
EAT



LIVE

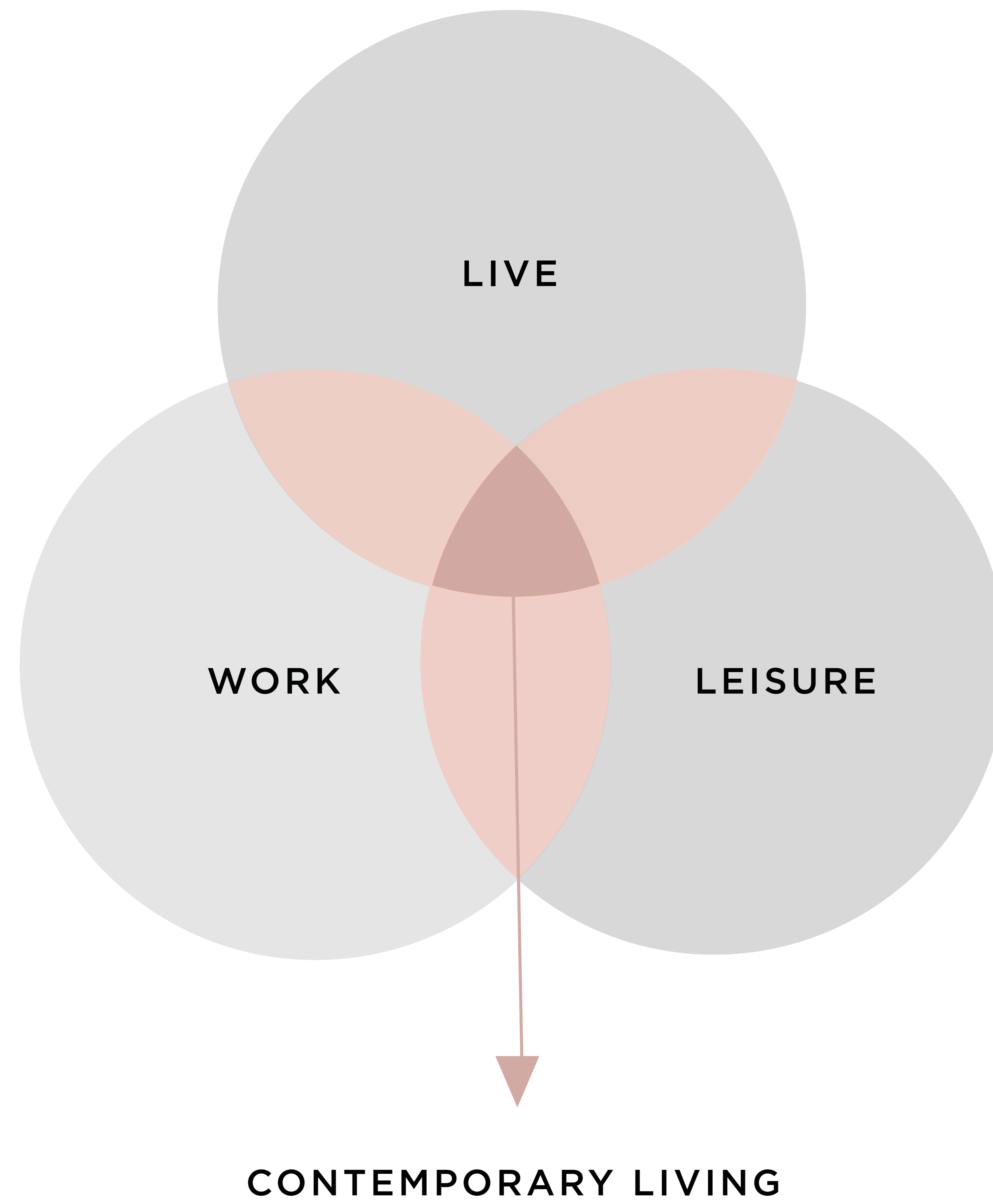


SHOP



WORK

We are living in an increasingly blended world



We design globally

- UK and HK Offices
- Projects



# Our home



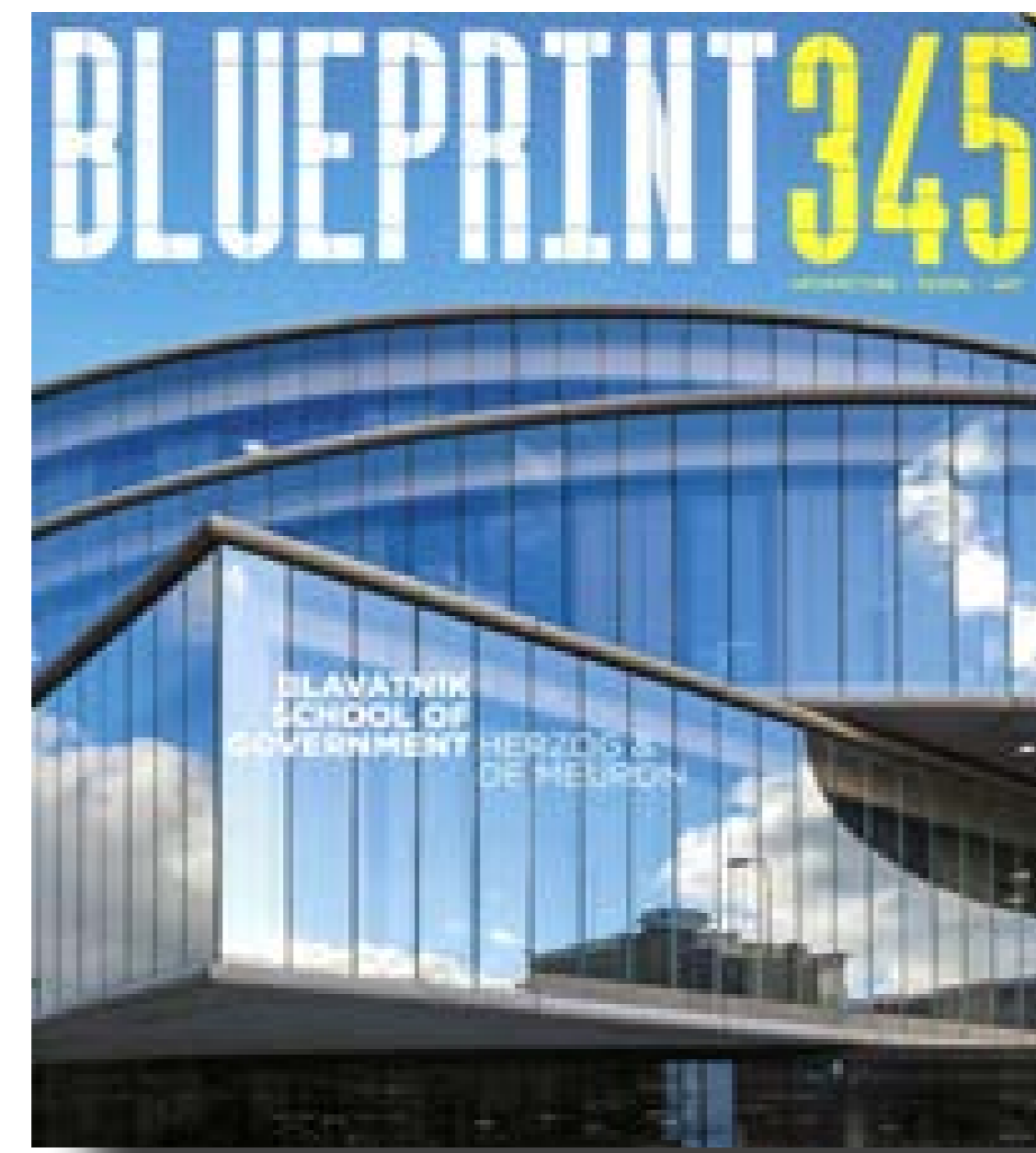
LONDON | BUTLERS WHARF



HONG KONG | PMQ



...and are internationally recognised



### Conran and Partners 二子玉川街区规划, 东京 / FUTAKO TAMAGAWA, TOKYO

Conran and Partners 近期完成了东京近十年来最大的单体开发项目——二子玉川。该项目坐落于东京的西南边缘、多摩川畔。在与 Cesar Pelli、KPF 和隈研吾等一系列世界知名建筑事务所的竞争中，Conran and Partners 赢得了这个项目。在实现区域复兴的同时，这个全部建成的城市规划项目将可持续设计与自然环境相融合，提高了周围居民与工作者的生活质量。

Conran and Partners recently completed Tokyo's single largest development in the last 10 years, Futako Tamagawa. Located on the south-west edge of the city alongside the Tama River, Conran and Partners won the project in limited competition against a list of international architects including Cesar Pelli, KPF and Kengo Kuma. Realising the revival of the region, the completed master plan integrates sustainable design with the natural environment to improve the lives of those that live and work there.



# 东

着眼于未来城市的街区规划 / THE NEIGHBORHOOD PLANNING FROM THE PERSPECTIVE OF FUTURE CITY BUILDING

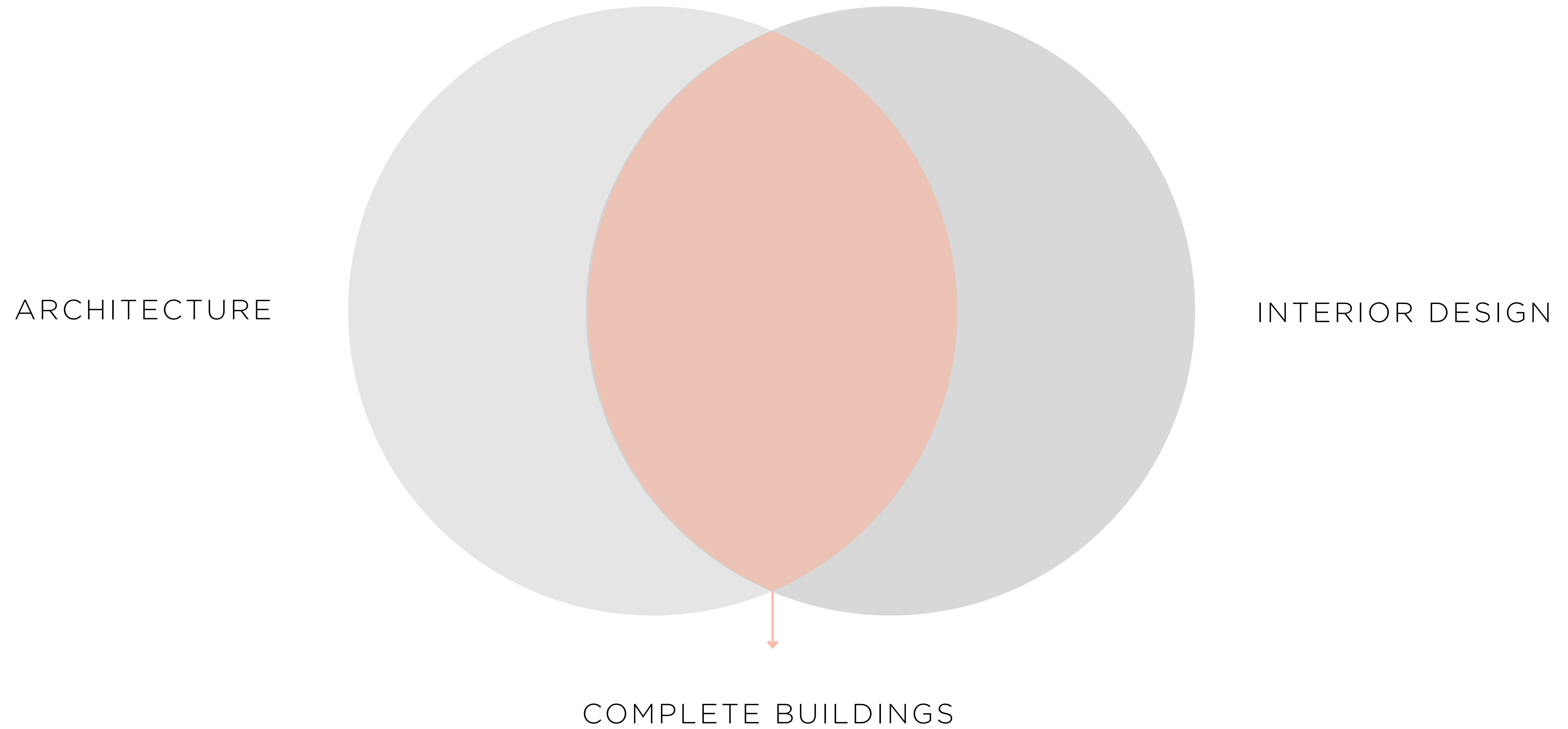
Tim Bowler-Ridger 作为一家来自伦敦的建筑事务所，我们幸运地不会受到地震的困扰，但在我们做日本项目的过程中，与当地的项目团队的密切合作至关重要。我们在重要的技术与安全设计上听从了他们的建议与经验。就项目来说，我们使用了隔震结构，紧急能源生成可能持续72小时运转。此外还有来自双电力传输线的稳定电源供给以及灾难预备设施，如 Kamado 长椅（能够被用作室外烹饪烤箱）、沙井厕所，还有存储紧急重要设备的救灾仓库。

Domus China: Conran and Partners 在本项目中是如何处理自然与周边环境关系的？有怎样的原则？

Tim Bowler-Ridger: 我们对于场地的核心理念在于积极且持续地回应它在城市与自然中的角色。对我们来说，如何呈现出场地在景观以及建筑设计上的特色是非常重要的。所以，作为城市与自然的转接，围绕场地的规划有了潜移默化的变化。在更加城市化的高速进程中，东二子玉川项目综合使用了众多可持續设计，因地制宜地处理了与周边环境的关系。对于复兴城市街区具有重要的参考意义。为此，《Domus国际中文版》邀请到了Conran and Partners建筑事务所总经理Tim Bowler-Ridger先生与我们探讨项目中“未来城市”的理念。

Domus China: 在东京二子玉川项目中，Conran and Partners在激烈的竞争中脱颖而出。一系列国际建筑事务所，如Cesar Pelli, KPF以及隈研吾

We work equally across the disciplines



We work across all scales



MASTERPLANNING



ARCHITECTURE



INTERIOR DESIGN



DETAIL

MACRO

MICRO

Across all typologies



HISTORIC FABRIC

NEW BUILD

# Our start in Japan



## Roppongi Hills, Tokyo

Mori Building Company

We give identity and personality to projects



RIBA REGENT STREET WINDOW



GERMAN GYMNASIUM



GUEST HOUSE



GREENWICH PENINSULA



# 22 SHAD THAMES

London

---

Conran and Partners

22 SHAD THAMES LONDON















RETHINK TOM DIXON  
THE ARCHITECTURE OF HOPE CHARLES JENCKS

CELTIC  
THAMES AND HUDSON

TERENCE CONRAN small spaces

MANUFACTURING PROCESSES FOR DESIGN PROFESSIONALS

NICOLA HICKS

BEHIND THE BARR  
WOODRIDGE  
COURTLYN WALKLEY THE CONTEMPORARY

ANDREW MARTIN  
THE ARCHITECTURE OF HOPE CHARLES JENCKS  
THE INTERIOR WORLD OF TOM DIXON  
DESIGN HOTELS YEAR BOOK 080

TERENCE CONRAN

TERENCE CONRAN  
THE ULTIMATE HOUSE BOOK  
FOR HOME DESIGN IN THE TWENTY-FIRST CENTURY

Japan's Modern Interiors

A HISTORY OF ARCHITECTURE  
NEW GREAT ARCHITECTURES



Eat London  
TIME AND STYLE ALL THE PEOPLE LIVING FOR TODAY  
DICE KAVEK  
NERI

消閒 leisure  
餐譜 dining out

LIGHTING DESIGN



World Hotels  
Eco House Book  
the Japanese house  
Sustainability in Modern Design

MASS  
THE CONTEMPORARY LANDSCAPE DESIGN AND DESIGNERS OF CONTEMPORARY LANDSCAPE

ORGANIZED LIVING  
TERENCE CONRAN small spaces



TERENCE CONRAN NAGY KONYHAKÖNYV  
THE DESIGN HOTELS BOOK



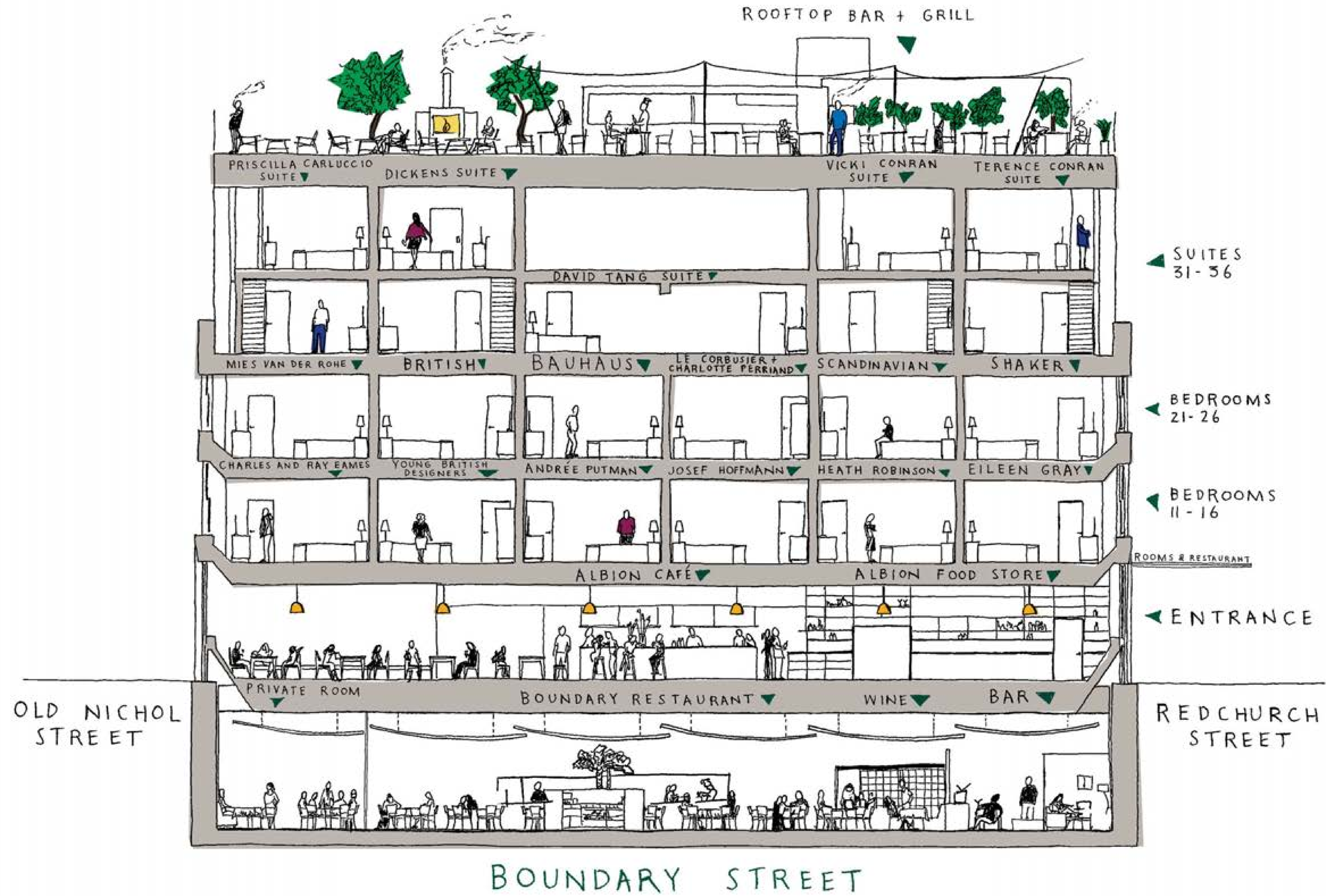
# BOUNDARY

SHOREDITCH **LONDON**

---

Prescott & Conran

# A SECTION THROUGH BOUNDARY



BOUNDARY LONDON

# BOUNDARY



A.P.C.











BOUNDARY LONDON



BOUNDARY LONDON





# Restaurant & Bar Design Awards

Winner



## GERMAN GYMNASIUM

KING'S CROSS LONDON

---

D&D London



GERMAN GYMNASIUM LONDON





## GERMAN GYMNASIUM LONDON



“

Our brief for German Gymnasium was to create a modern interpretation of a classic brasserie, with German undertones – which led to much research, exploration and analysis. And, as someone with a German background myself, I was particularly conscious of our responsibility to honour and celebrate the building’s past as well as take it forward to an exciting future as a ‘destination’ restaurant and bar.

Tina Norden | Partner at Conran and Partners

”

GERMAN GYMNASIUM LONDON





# PURO KAZIMIERZ HOTEL

KRAKOW POLAND

---

The Genfer Group













PURO KAZIMIERZ HOTEL KRAKÓW





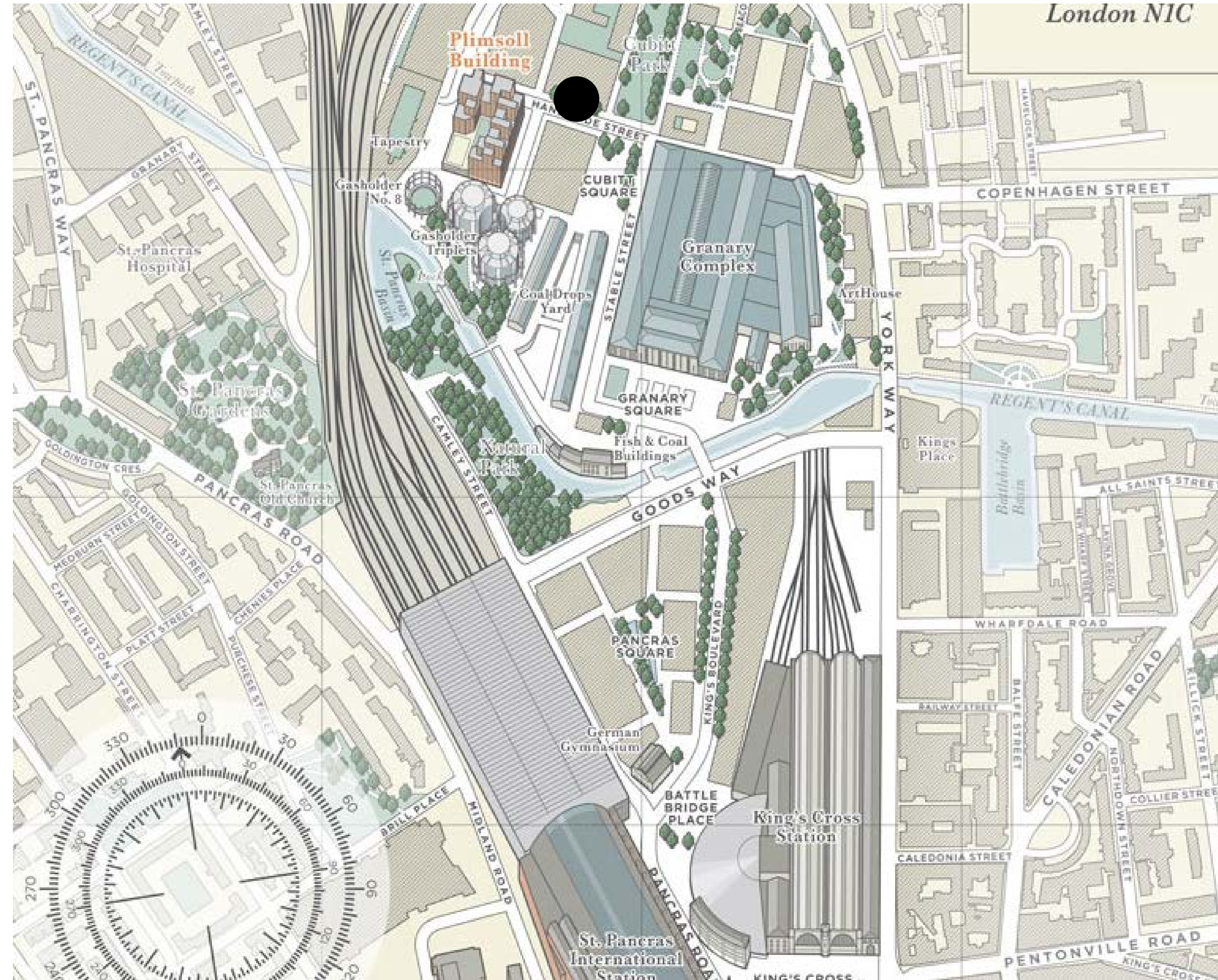
# LUMA KING'S CROSS

KING'S CROSS LONDON

---

Argent

# LUMA KING'S CROSS LONDON



“ Inspired by the grandeur of historical rail travel and King's Cross as a gateway to inspiring destinations to **escape the City** ”

LUMA KING'S CROSS LONDON



LUMA KING'S CROSS LONDON



MA KING'S CROSS LONDON



LUMA KING'S CROSS LONDON





# CROWNE PLAZA

BLUEPRINT EUROPE

---

IHG







CROWNE PLAZA PARIS - RÉPUBLIQUE







# GRAY'S INN ROAD

London

---

Great Portland Estates

GRAY'S INN ROAD LONDON



GRAY'S INN ROAD LONDON



GRAY'S INN ROAD LONDON





KEF  
MUSIC  
GALLERY

MAKE  
KEF

# KEF MUSIC GALLERY

DUDELL STREET HONG KONG

---

KEF



KEF MUSIC GALLERY HONG KONG





# THE LIFE

South Korea Rollout

---

E-Mart

“THE LIFE” E-MART SEOUL



“THE LIFE” E-MART SEOUL

  
BUILD  
YOUR HOME  
BEAUTIFUL





# KITA AOYAMA

TOKYO JAPAN

---

NTT Urban Development Corporation

KITA AOYAMA TOKYO

富士山  
青山  
圖座巻

北山  
青山  
圖座巻





KITA AOYAMA TOKYO



KITA AOYAMA TOKYO





KITA AOYAMA TOKYO



KITA AOYAMA TOKYO - ON SITE





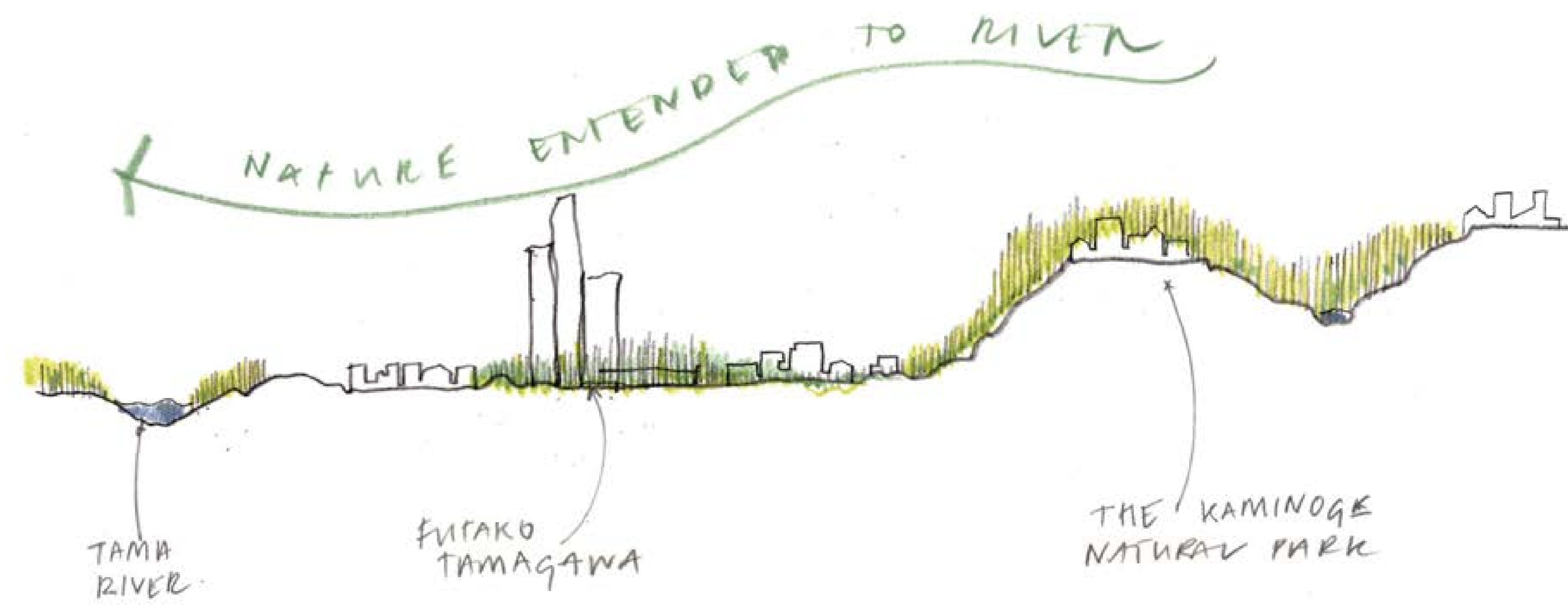
# FUTAKO TAMAGAWA

TOKYO JAPAN

---

Futako-Tamagawa Committee

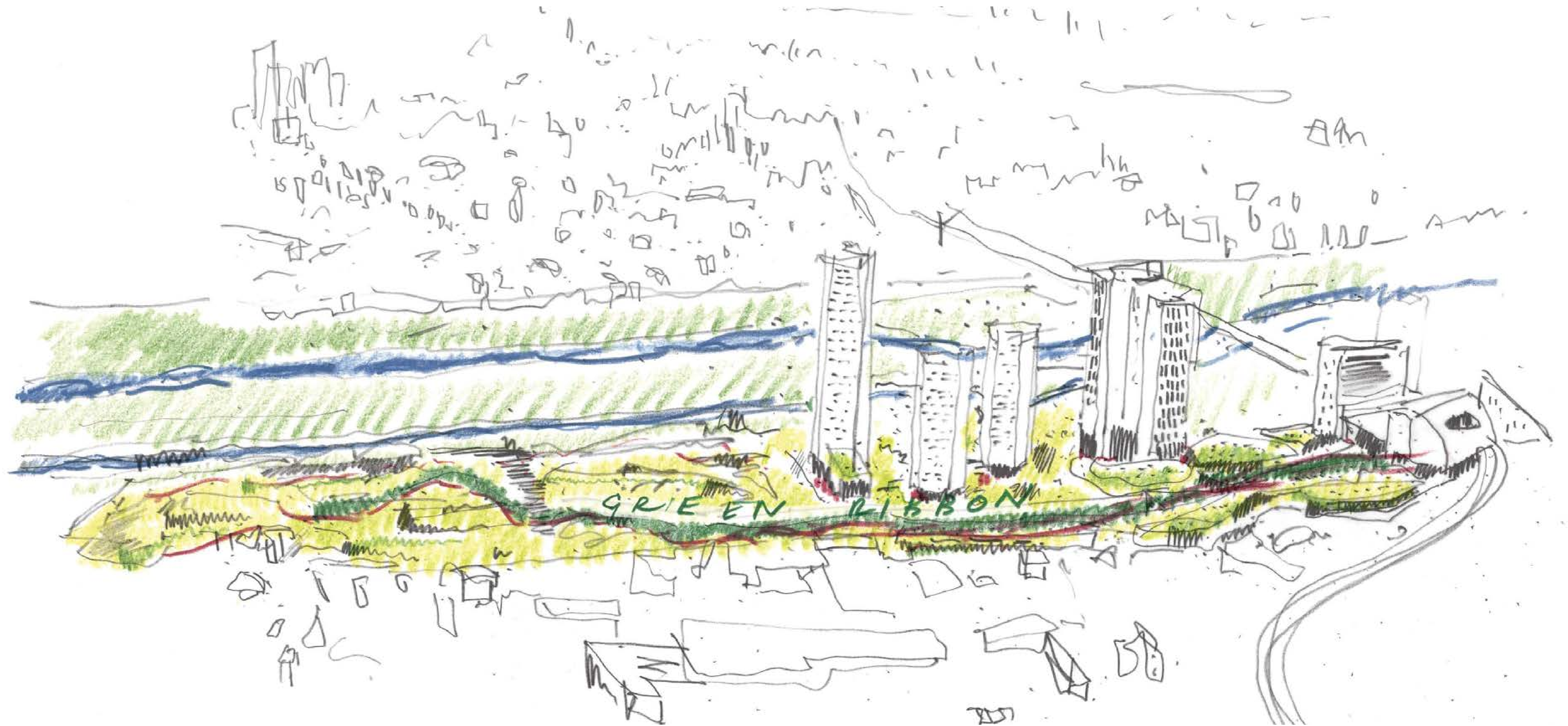
FUTAKO TAMAGAWA TOKYO



FUTAKO TAMAGAWA TOKYO



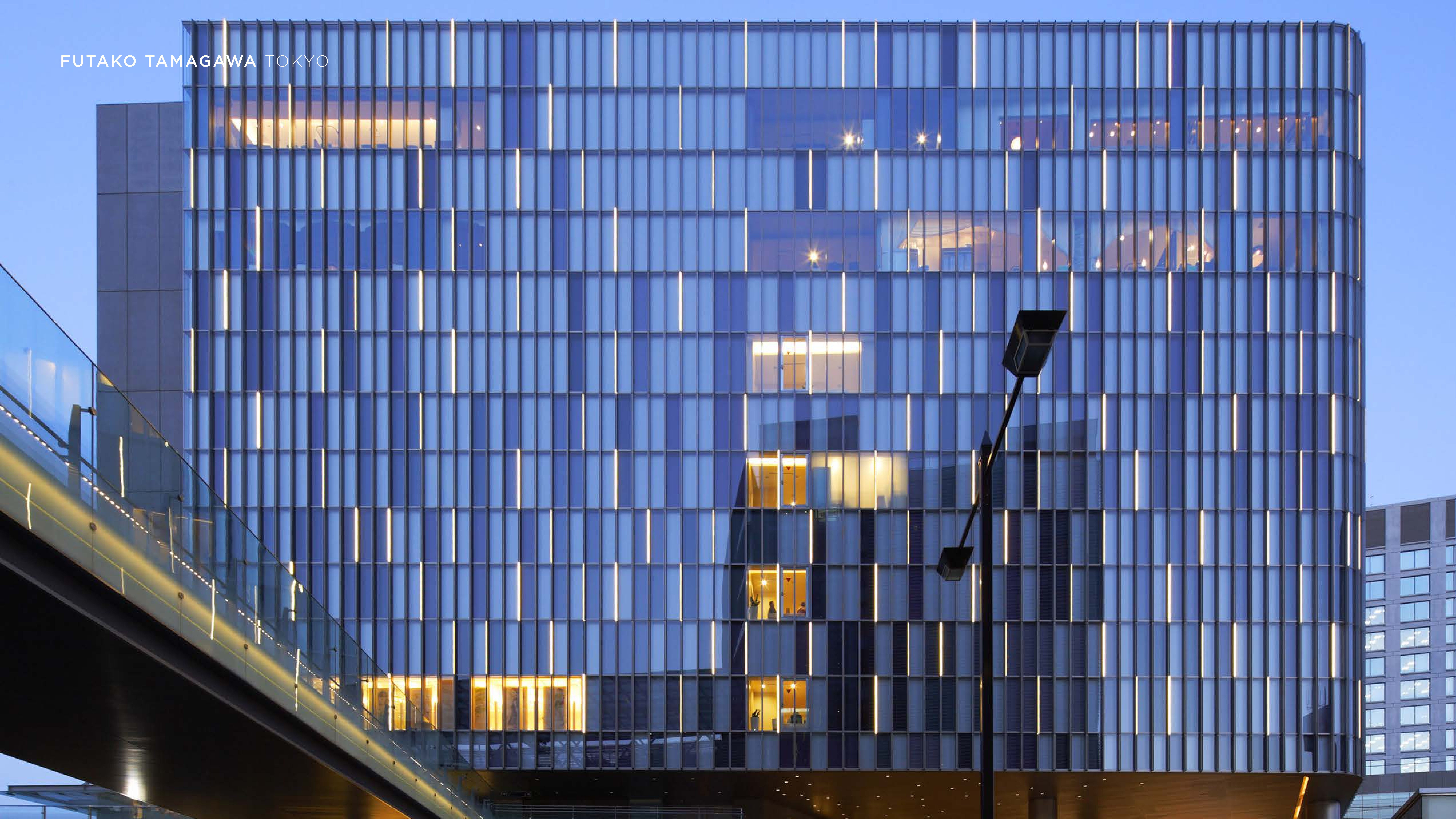




FUTAKO TAMAGAWA TOKYO



FUTAKO TAMAGAWA TOKYO



FUTAKO TAMAGAWA TOKYO





rise

- ↑ 2F 2F
- ↑ 3F 3F
- ↑ 4F 4F
- ↑ 5F 5F
- ↑ 6F 6F
- ↑ 7F 7F
- ↑ 8F 8F
- ↑ 9F 9F
- ↑ 10F 10F
- ↑ 11F 11F
- ↑ 12F 12F
- ↑ 13F 13F
- ↑ 14F 14F
- ↑ 15F 15F
- ↑ 16F 16F
- ↑ 17F 17F
- ↑ 18F 18F
- ↑ 19F 19F
- ↑ 20F 20F
- ↑ 21F 21F
- ↑ 22F 22F
- ↑ 23F 23F
- ↑ 24F 24F
- ↑ 25F 25F
- ↑ 26F 26F
- ↑ 27F 27F
- ↑ 28F 28F
- ↑ 29F 29F
- ↑ 30F 30F
- ↑ 31F 31F
- ↑ 32F 32F
- ↑ 33F 33F
- ↑ 34F 34F
- ↑ 35F 35F
- ↑ 36F 36F
- ↑ 37F 37F
- ↑ 38F 38F
- ↑ 39F 39F
- ↑ 40F 40F
- ↑ 41F 41F
- ↑ 42F 42F
- ↑ 43F 43F
- ↑ 44F 44F
- ↑ 45F 45F
- ↑ 46F 46F
- ↑ 47F 47F
- ↑ 48F 48F
- ↑ 49F 49F
- ↑ 50F 50F
- ↑ 51F 51F
- ↑ 52F 52F
- ↑ 53F 53F
- ↑ 54F 54F
- ↑ 55F 55F
- ↑ 56F 56F
- ↑ 57F 57F
- ↑ 58F 58F
- ↑ 59F 59F
- ↑ 60F 60F
- ↑ 61F 61F
- ↑ 62F 62F
- ↑ 63F 63F
- ↑ 64F 64F
- ↑ 65F 65F
- ↑ 66F 66F
- ↑ 67F 67F
- ↑ 68F 68F
- ↑ 69F 69F
- ↑ 70F 70F
- ↑ 71F 71F
- ↑ 72F 72F
- ↑ 73F 73F
- ↑ 74F 74F
- ↑ 75F 75F
- ↑ 76F 76F
- ↑ 77F 77F
- ↑ 78F 78F
- ↑ 79F 79F
- ↑ 80F 80F
- ↑ 81F 81F
- ↑ 82F 82F
- ↑ 83F 83F
- ↑ 84F 84F
- ↑ 85F 85F
- ↑ 86F 86F
- ↑ 87F 87F
- ↑ 88F 88F
- ↑ 89F 89F
- ↑ 90F 90F
- ↑ 91F 91F
- ↑ 92F 92F
- ↑ 93F 93F
- ↑ 94F 94F
- ↑ 95F 95F
- ↑ 96F 96F
- ↑ 97F 97F
- ↑ 98F 98F
- ↑ 99F 99F
- ↑ 100F 100F

FUTAKO TAMAGAWA TOKYO



FUTAKO TAMAGAWA TOKYO





# CENTRE POINT

TOTTENHAM COURT ROAD **LONDON**

---

Almacantar



CENTRE POINT LONDON



CENTRE POINT LONDON



BEFORE INTERNAL OFFICE SPACE



BEFORE EXTERNAL ACCESS STAIRCASE

CENTRE POINT LONDON



CENTRE POINT LONDON



CENTRE POINT LONDON







CENTRE POINT LONDON





CENTRE POINT LONDON



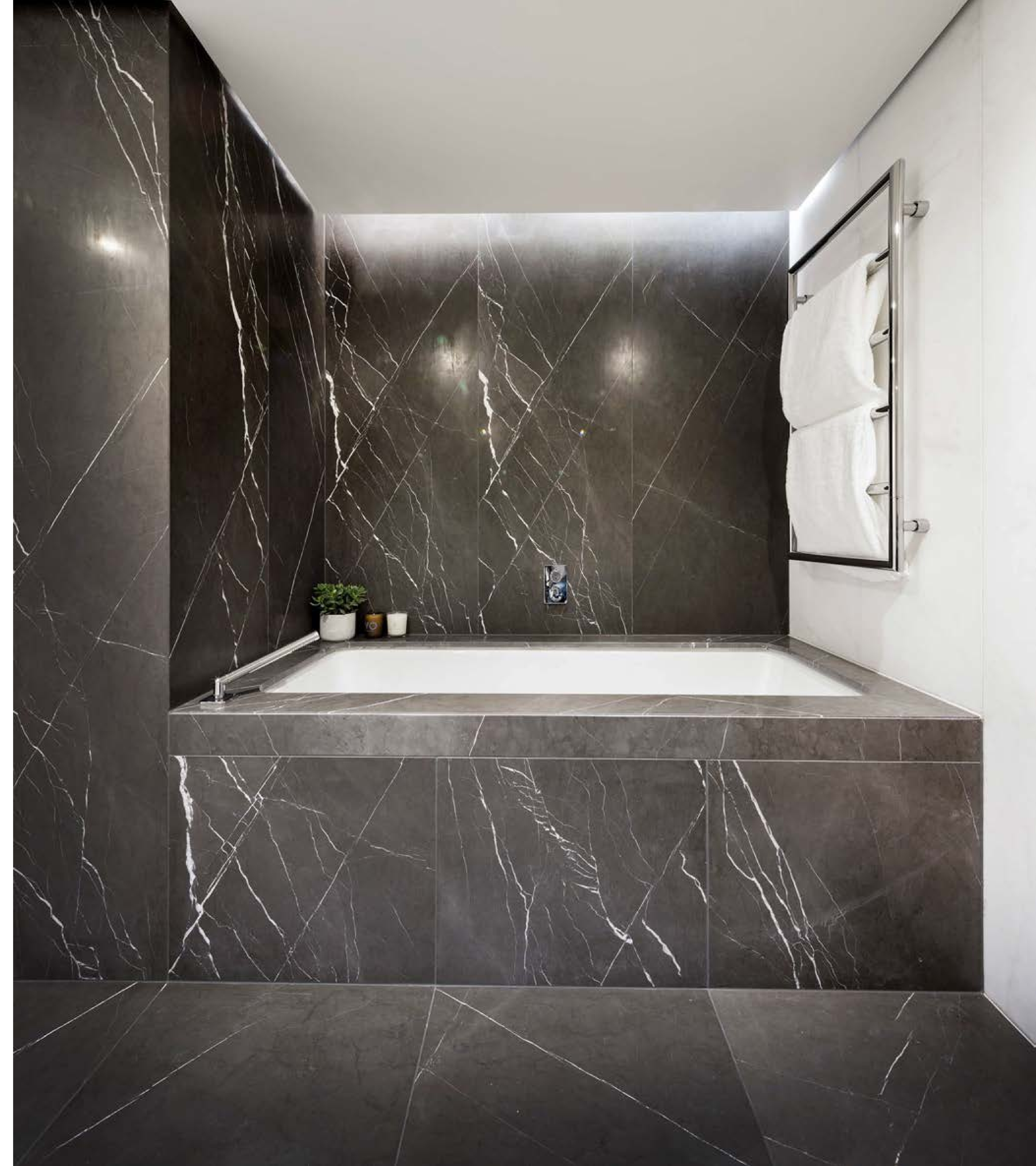




CENTRE POINT LONDON



CENTRE POINT LONDON



CENTRE POINT LONDON



CENTRE POINT MARKETING EXPERIENCE LONDON



CENTRE POINT LONDON







CENTRE POINT LONDON



Thank You



**CONRAN+**  
**PARTNERS**