

Private Debt
Investor

Tokyo Forum 2019

5 November
Shangri-La Hotel

Confirmed attendees include:

- » Aflac Asset Management Japan
- » Aflac Life Insurance Japan
- » AISIN Employees' Pension Fund
- » Aksia
- » AI Inma Tokio Marine
- » Alternative Investment Capital
- » ANARI Inc.
- » Asahi Mutual Life Insurance
- » AXA Life Insurance
- » Barak Fund Management
- » bfinance
- » BlueBay Asset Management
- » BMO Global Asset Management
- » BNP Paribas Asset Management Japan
- » BNY Mellon
- » BNY Mellon Asset Management Japan
- » Bridgepoint Credit
- » Brookfield Asset Management
- » Campbell Lutyens
- » Carlyle Japan Equity Management
- » Cathay Life Insurance
- » Cerberus Japan K.K.
- » Churchill Asset Management
- » Comvest Credit Partners
- » Crescent Capital Group
- » Crosspoint Advisors
- » CVC Asia Pacific
- » Daido Life Insurance
- » DBJ Asset Management
- » DENSO Pension Fund
- » Development Bank of Japan
- » Farmers' Pension Fund
- » First Eagle Investment Management
- » Fitch Ratings
- » Fuji Xerox
- » Goldman Sachs - Merchant Banking Division
- » Goldman Sachs Asset Management
- » Government Pension Investment Fund (GPIF)
- » I Squared Capital
- » ICG
- » Idemitsu Pension Fund
- » IFM Investors (Japan)
- » Japan Post Bank
- » Japan Post Insurance
- » Konomi Inc
- » Kyokuto Securities
- » Manulife Life Insurance
- » Marubeni Corporation
- » MetLife Asset Management
- » MGG Investment Group
- » Mirae Asset Global Investments
- » Mitsui Sumitomo Primary Life Insurance (MSPL)
- » Monitor Capital LLC
- » Monroe Capital
- » Monument Group
- » National Federation of Mutual Aid Associations for Municipal Personnel
- » National Kyosai Federation of Japan Agricultural Cooperatives (ZENKYOREN)
- » National Pension Fund Association
- » Neuberger Berman Asia
- » Nippon Life Insurance
- » Nomura Funds Research & Technologies
- » Orix Life Insurance
- » ORIX Life Insurance Corporation
- » Osaka Shoko Shinkin Bank
- » Park Hill Group
- » Pension Fund Association
- » Pension Fund Association for Local Government Officials
- » Shinkin Central Bank
- » Sony Bank
- » Southern Cross Capital
- » Sumitomo Mitsui Asset Management
- » Sumitomo Mitsui Trust Bank
- » T&D Financial Life Insurance
- » Taiyo Life Insurance
- » Tasku Advisors
- » The Dai-ichi Life Insurance
- » The Gibraltar Life Insurance
- » The Norinchukin Trust & Banking
- » The Prudential Life Insurance
- » Tikehau Capital
- » Tokio Marine & Nichido Fire Insurance
- » Tokio Marine Asset Management
- » Tokyo University of Science
- » Topaz Capital
- » TransPacific Group
- » West Japan Machinery Pension Fund

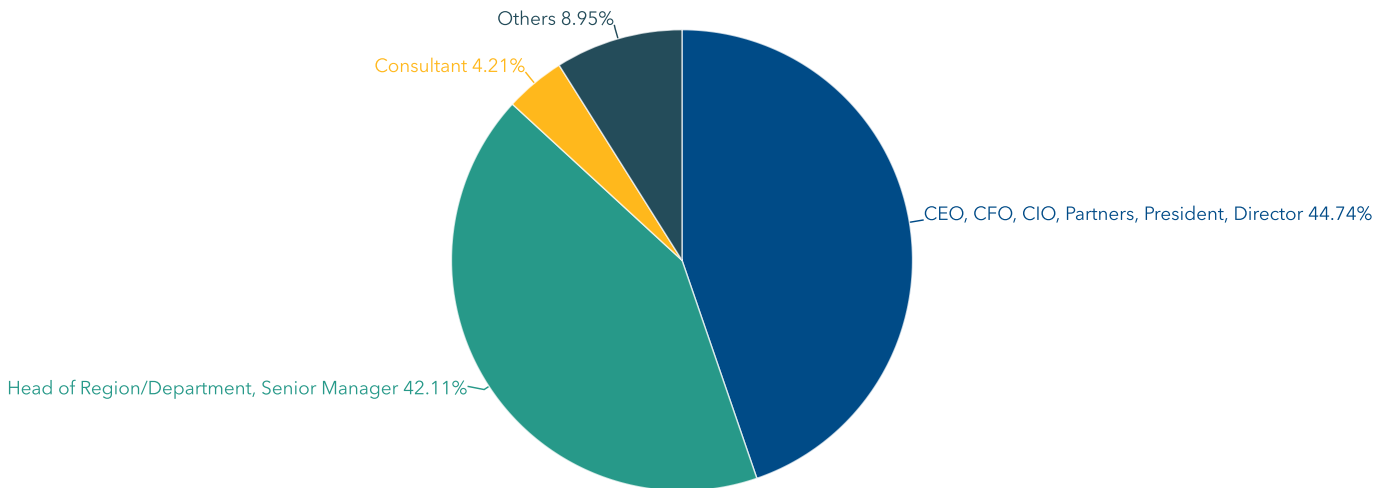
Private Debt
Investor

Tokyo Forum 2019

5 November
Shangri-La Hotel

PDI TOKYO ATTENDEE'S DEMOGRAPHY

Join the influential investor bases in Japan and Korea and discover your next capital allocation opportunities.



Secure your place today
and gain unrivalled insight into the minds of investors that
are shaping the future of private debt.

BOOK NOW ▶

PEI

www.privatedebtinvestor.com/tokyo | #PDITokyo