



Private Equity
International

**Women in Private
Equity Forum**

Infrastructure
Investor

**Women in
Infrastructure Forum**

PERE

**Women in Real
Estate Forum**

Private Debt
Investor

**Women in Private
Debt Forum**

Women in Private Markets Summit

Virtual Experience 2020

One Summit: Four Forums

3-4 November | GMT

Driving diversity in a time of change

PEI

Contents

- » The virtual experience ➡
- » Keynote panel ➡
- » Highlighted speakers ➡
- » Featured panels ➡
- » Networking opportunities ➡
- » Testimonials from last year ➡
- » Sponsors ➡
- » Secure your place ➡



Achieve more at our immersive VIRTUAL EXPERIENCE



Insight from your peers

Connect with over 500 private market professionals through interactive roundtables and discussions. Collaborate, share key challenges and discover solutions.



5 days of private meetings

Throughout the week of the event you can arrange one-to-one video meetings with any attendees for private discussions with the people you most want to meet.



Hear from industry leaders

Hear from senior professionals including CIBC, DWS, Hg, LGT, Permira Debt Managers, Stepstone and Tikehau Capital on how they are actively addressing diversity, raising funds remotely and engaging with investors.



12 months access to the market

The platform will be open 4 weeks before and 11 months after the event to allow you to continue conversations with other attendees and catch up on any of the content you missed.

KEYNOTE PANEL



Matthew Brockman

Managing Partner
Hg



Wol Kolade

Managing Partner
Livingbridge



Mary Kuusisto

Managing Partner
Proskauer



Deborah Zurkow

Global Head of Investments
AllianzGI

View the full speaker list for each forum

Private Equity
International

**Women in Private
Equity Forum**

Virtual Experience 2020



Infrastructure
Investor

**Women in
Infrastructure Forum**

Virtual Experience 2020



PERE

**Women in Real
Estate Forum**

Virtual Experience 2020



Private Debt
Investor

**Women in Private
Debt Forum**

Virtual Experience 2020



Highlighted speakers



Ruulke Bagijn
Head of Investment
Solutions
The Carlyle Group



Maria Carradice
Portfolio Director
Mayfair Equity Partners



Alison Humphrey
Director, ESG
TPG



**Lisya Bahar
Manoah**
Partner
Catalyst Fund



Simon Faure
Managing Director
of Private Equity,
Alternatives
M&G



Nina Kraus
Vice President
Hamilton Lane



Bridget Barker
Non-Executive Director
and Consultant



Anna Follér
Sustainability Manager
AP6



Kirsten Lapham
Partner
Proskauer



Anamica Broetz
Head of Investor Relations
Private Equity - DWS



Dörte Höppner
Chief Operating Officer
Riverside Europe



Karen O'Mahony
Managing Director
PEAL Investments

Highlighted speakers



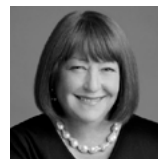
Emily Azer

Principal
GI Partners



Beverley Gower-Jones

Managing Partner
Clean Growth Fund



Laurie Mahon

Vice-Chair, US Investment
Banking, Global Investment
Banking
CIBC World Markets



Esperanza Cerdan

Chief Risk Officer
IFM Investors



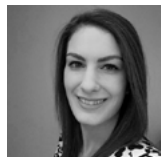
Lucy Heintz

Partner - Energy
Actis



Dan McCarthy

Chief Executive Officer
One Search



Nicole Douglas

Head of Investor Research
Infrastructure Investor,
PEI Media



Anke Heinze

Director of the
Investments and
Financing Department
AviAlliance



**Patricia Rodrigues
Jenner**

Investor & Advisor
in Real Assets,
Independent



Irina Frolova

Head Asset Management
Infrastructure
PGGM Infrastructure Fund



Kriti Madan

Vice President
**Northleaf Capital
Partners**



**Ellinor
Schrewelius**

Investment Director
AP6

Highlighted speakers



**Patricia Bandeira
Vieira**

Principal - Client and
Partner Group
KKR



Jessica Hardman

Head of Portfolio
Management - UK & Ireland
Real Estate Group
DWS



Martina Malone

Managing Director -
Global Head of Capital
Raising
Prologis



Sue Brown

Managing Director
Real Estate Balance



Amy Johannes

Managing Director
**Oaktree Capital
Management**



Kari Pitkin

Head of Business
Development
Allianz Real Estate



Gila Cohen

Managing Director, Real
Estate and Private Equity
MUFG



Audrey Klein

Head of Fundraising
**Kennedy Wilson
Europe**



Isabel Ruiz-Halter

Senior Consultant
One Search



Maggie Coleman

Senior Managing Director
JLL



Evelyn Lee

Editor
PERE



Dr. Ilkka Tomperi

Head of Real Estate,
Investment Director
Varma

Highlighted speakers



Riddhi Bhalla
Managing Director
Carlyle



Martha Heitmann
Partner
LGT Capital Partners



Kristin Shearer
Vice President
**Northleaf Capital
Partners**



Kirsten Bode
Co-Head of European
Private Debt Fund
Muzinich and Co



Jocelyn Lewis
Executive Director,
Private Debt Strategy,
Financial Services
IHS Markit



Laura Shen
Partner and Co-Founder
**Headway Capital
Partners**



Anne Gales
Partner
Threadmark



Erin Sarret
Director
StepStone Group



Nicole Waibel
Managing Director
**Crescent Credit
Europe**



Claire Harwood
Investment Director
Permira Debt Managers



Candace Shaw
Portfolio Manager and
Head of Private Fixed
Income
SLC Management



Michelle Winters
Vice President
**Northleaf Capital
Partners**

Women in Private Equity Forum

Virtual Experience 2020

Featured panels



State of Play: how can private equity capture the upside in a downturn?

- » How leading funds have raised significant capital in expectation of a crisis
- » Putting money to work whilst the length of the disruption is still unknown
- » Managing relationships with investors: Has there been a rise in LP defaults?
- » In what sectors could opportunities emerge in the coming months?



Raising funds remotely: Can you raise millions without a handshake?

- » Completing due diligence remotely
- » Starting a new fundraise vs. completing one that had already begun
- » Examples from the past few months and any learnings for future fund raising



Investor perspectives on private equity as the economic climate darkens

- » To what extent are investors comfortable with differing investment approaches?
- » What questions should investors be asking fund managers? Are investors happy with communications from GPs in the past few months?
- » How to value a limited partnership stake during a crisis where valuations are moving fast?

[View full agenda ↗](#)

Women in Infrastructure Forum Virtual Experience 2020

Featured panels



State of Play: investing in infrastructure assets during a pandemic

- » How have legacy assets been impacted by covid-19 disruption?
- » What measures have GPs put in place to manage assets and reduce downside risk?
- » Working with your investors to allay concerns virtually
- » How are funds putting money raised pre-covid to work?



The direction of travel: What will the future of transportation look like?

- » Positioning for further disruption in coming years
- » To what extent should managers be concerned about changing attitudes to travel both climate and virus related?
- » Are operators looking for other revenue streams?



To what extent are investments in digital infrastructure recession proof?

- » How recent disruption has further highlighted the importance of digital infrastructure
- » How well has the UK and Europe's digital infrastructure been able to cope with the much-increased demands brought on by the coronavirus pandemic?
- » Where are investors seeing opportunities as working habits evolve?

[View full agenda ↻](#)

Women in Real Estate Forum

Virtual Experience 2020

Featured panels



State of Play: to what extent is current market volatility a buying opportunity?

- » Assessing the impact of covid-19 disruption on private real estate investments
- » Which sectors will benefit from technological disruption and who will be more vulnerable as a result?
- » Outlook on the rates/yield environment



How covid-19 has created opportunities in the booming logistics market

- » To what extent have necessary changes to supply chains built resilience?
- » Considering impact on pricing and returns for logistics investments
- » What are potential obstacles to the European logistics market going forward?



Office real estate: investing in a sector with an uncertain future

- » Expectations for the future of work and how this will impact commercial real estate
- » How are operators innovating in a time of crisis?
- » Will we see a wave of defaults in the next 12 months?

[View full agenda ↗](#)

Women in Private Debt Forum

Virtual Experience 2020

Featured panels



State of Play: to what extent is private debt recession proof?

- » How has private debt fared over the past few months in comparison to other public and private assets?
- » Which vehicles and strategies are proving particularly resilient to the downturn?
- » What shortcomings and limitations have threatened private debt markets? How have these been overcome?



Investor view: The evolving role of private debt within your alternative asset portfolio

- » How have the events of 2020 so far impacted appetite for private debt investment?
- » How have illiquidity premiums for the asset class been affected by the crisis?
- » What should investors do to ensure that they manage risk effectively and are increasing their exposure sustainably?
- » How are distressed and special situation opportunities being viewed now?



Where are opportunities in alternative credit due to current market disruption?

- » Should investors be taking advantage by deploying capital now?
- » Dislocation funds, distressed, special situations and real asset debt - assessing the different options
- » Do private credit secondaries still present opportunity in the current environment?

[View full agenda ↻](#)

NETWORKING OPPORTUNITIES

1

Pre-event diversity workshop

Identify other attendees with a similar focus in this interactive workshop series hosted by Hg, Europe's leading investor in software and services. The video roundtable will be hosted by a workshop leader and one-two speakers who will kick-off the discussion with attendees from across the private capital industry.

2

LP-only networking session with ILPA

Join Jennifer Choi, ILPA's Managing Director of Industry Affairs, for a private institutional investor-only video meeting the day before the event.

3

Private 1-2-1 meetings

Arrange video meetings throughout the week of the event. Search or filter the delegate list to find the people you want to meet, arrange a time and send them a meeting invite.

4

Meet the speaker sessions

Connect with the speakers following their panels through the interactive Q&A sessions. Ask your questions on screen or through the chat to make sure you get the most from the event.

5

Speed-networking sessions

Sign up to join five randomly generated meetings and be matched with those of a similar interest, to quickly expand your network.

6

12 months access to the community

You will have 12 months of access to the platform. Login 4 weeks before the event to build your agenda and arrange meetings. The messaging system and recordings of all sessions will then be available for an additional 11 months after the event.

TESTIMONIALS

from the 2019 Summit



Excellent networking opportunity. I have been attending since a few years and observing the conference grow in scale and relevance. Looking forward to next year!

Anamica Broetz
Head of Investor Relations
DWS

"Enjoyable and very informative conference, learnt a lot from some very knowledgeable women (and men!)"

Lucinda Hearth
Vice President - Portfolio and Asset Management
DWS

"It has been a long time since I have attended such a vibrant energised event where speakers, panellists and attendees were all so keen to share knowledge, thoughts and ideas. I am sure great things will come from the connections made at this Forum."

Lisa Walker
Head of Market Regulation
IPsx

"Great conference, excellent speakers and refreshing focus."

Hannah Logan
Executive Director
JP Morgan

"Genuine proof that diversifying audiences diversifies opinion. Insights to a range of markets that were unique, honest, measured. A must-attend for male counterparts and those in senior positions if they genuinely want to create an institutional culture of inclusivity."

Faten Bizzari
Head of Investment Research
IANUA

Sponsors

Diversity workshop sponsor



Lead Sponsors



Sponsors



Media partners



For more information on sponsorship opportunities still available contact
Christopher Wagland | chris.w@peimedia.com | +44 (0) 207 566 5475

“An incredibly inspirational event that would be a real benefit to any woman or man in the industry to attend.

Julie Dunne, Investment Operations Manager, The Church of England Pensions Board

1 Ticket. 4 Forums. FULL ACCESS TO THE SUMMIT.

BOOK NOW

**Women in Private
Equity Forum** →
Virtual Experience 2020

**Women in
Infrastructure Forum** →
Virtual Experience 2020

**Women in Real
Estate Forum** →
Virtual Experience 2020

**Women in Private
Debt Forum** →
Virtual Experience 2020

✉ **Email** customerservices@peimedia.com ☎ **Phone** +44 (0)20 7566 5445