

Women in Private Markets Summit

3-4 November

PEI Women in Private Markets Summit

Driving diversity in a time of change

3-4 November 2020

Pre-event Sessions: Monday 2 November

15:00-15:15

Event platform tutorial

Before the start of the day, this session will help to give you a brief overview of the Pathable platform to ensure you are comfortable with its use. The session will be interactive so you will have an opportunity to ask us questions on anything you are not sure about when it comes to the technical side of things.

15:15-17:00

Pre-event interactive roundtables and workshops

In these interactive roundtables you will be placed in a zoom-style call to discuss the relevant topic with other industry members. The sessions will be hosted by a virtual workshop leader and one-two speakers, they will help kick off the discussion and then it will turn into a more free-flowing discussion with other participants.

Please be prepared to contribute with questions and input on how you are engaging with topics under discussion. There is a maximum of 10-15 participants per interactive workshop and you must register ahead of the time to ensure your place.

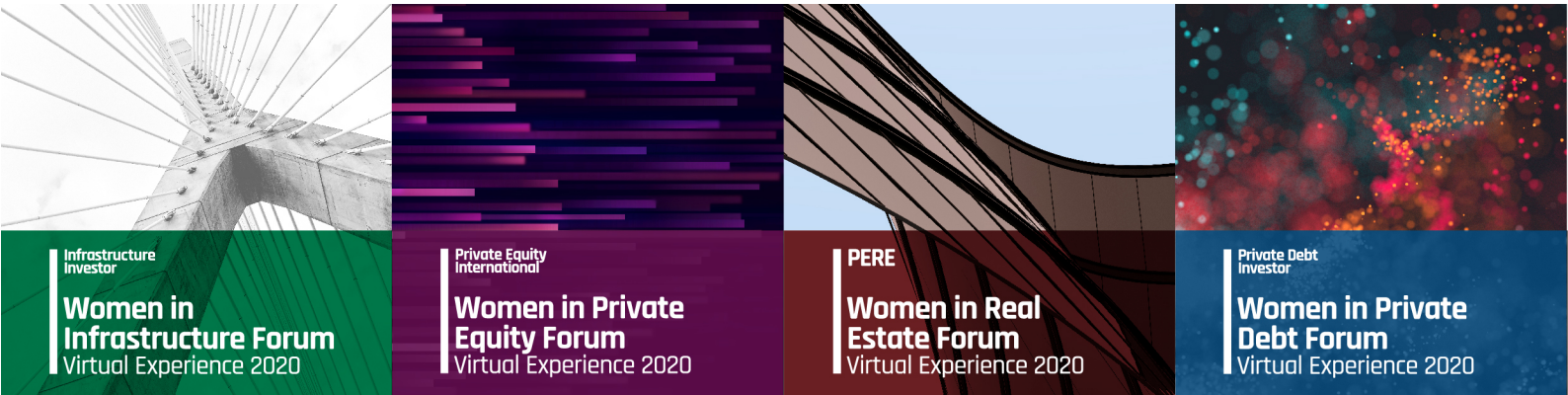
Provisional topics

- Career advancement
- Making yourself seen when working from home
- ESG & Real Assets
- Reverse mentoring
- Level 20
- Avoiding unconscious bias
- Ned Roles - Sue Hunter, Non-Executive Partner, Frog Capital

15:00-16:00

LP only ILPA Networking Session

Join Jennifer Choi, ILPA's Managing Director of Industry Affairs, for an LP-only session on November 2nd alongside PEI's Women in Private Equity Forum. This Chatham House Rules discussion will focus on latest diversity initiatives



Women in Private Markets Summit

3-4 November

and working with fund managers on addressing diversity. Attendees will be encouraged to share best (and worst) practices and experiences in this closed-door roundtable session. Off-the-record and invite only.

17:00-17:30

Icebreaker speed-networking

This unique session will allow delegates to participate in at least 5 private one-to-one meetings.

Day one: Tuesday 3 November

08.30

Interactive networking and roundtable discussions

09:15

PEI Welcome

09:40

Chairperson's opening remarks

Laurie Mahon, Vice-Chair, US Investment Banking, Global Investment Banking, **CIBC Capital Markets**

09:50

How are private markets faring in the current downturn?

- What can the last economic crisis teach us about today's markets?
- How are managers putting money to work in private markets?
- Are market leaders concerned by increasing public scrutiny?
- Is addressing ESG now a priority for leading fund managers across private markets?
- Predictions for the state of private markets in 2020

Erin Sarret, Director, **StepStone Group**

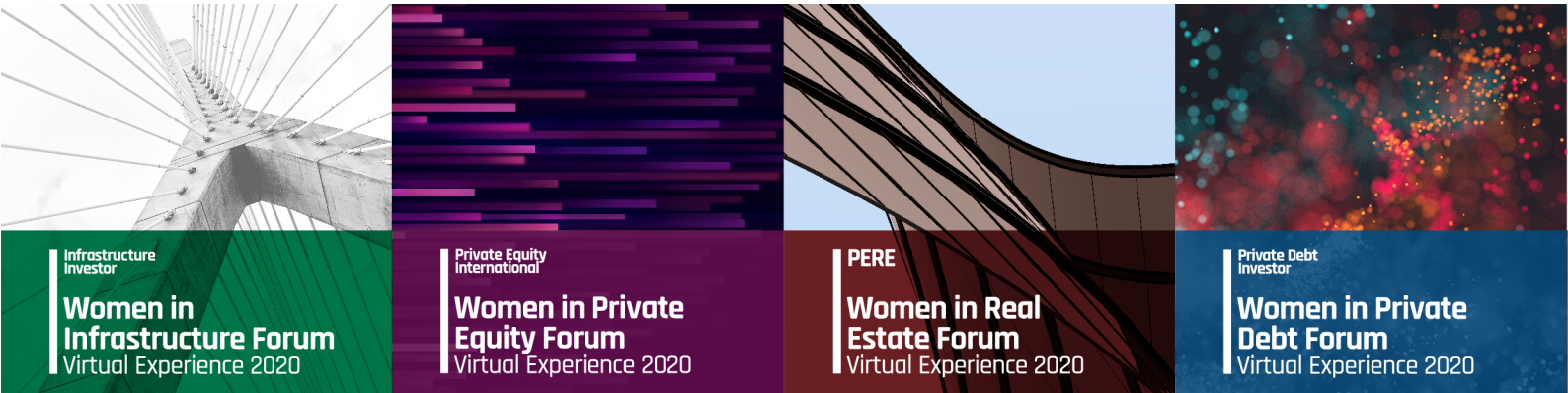
10:20

Quick break to stretch

10:25

How industry leaders are working to create a diverse and inclusive environment

- How diverse are the panellist's investment teams? How has this changed in the past decade?
- Making the business case for diversity from a fund managers perspective
- Are LPs demanding more from funds? What questions have been asked?
- The advantages of a modern approach to HR when recruiting and retaining millennial men as well as women



Women in Private Markets Summit

3-4 November

- Case studies of how industry leaders have made changes to their organisations and lessons learnt in the process

Moderator: **Mary Kuusisto**, Managing Partner, **Proskauer**

Matthew Brockman, Managing Partner, **Hg**

Deborah Zurkow, Global Head of Investments, **AllianzGI**

Wol Kolade, Managing Partner, **Livingbridge**

11:00

Networking Break including 1:1 meetings and meet the speakers

11:35 Infrastructure chairperson's opening remarks Laurie Mahon , Vice-Chair, US Investment Banking, Global Investment Banking, CIBC Capital Markets	11:35 Private equity chairperson's opening remarks Bridget Barker , Non- Executive Director and Consultant	11:35 Real estate chairperson's opening remarks	11:35 Private debt chairperson's opening remarks
11:40 State of Play: investing in infrastructure assets during a pandemic Patricia Rodrigues Jenner , Non-Executive Director Kriti Madan , Vice President, Northleaf Capital Partners	11:40 State of Play: how can private equity capture the upside in a downturn? Moderating role: Reserved Dörte Höppner , Chief Operating Officer, Riverside Europe	11:40 State of Play: to what extent is current market volatility a buying opportunity? Jessica Hardman , Managing Director, Head of Real Estate Group UK & Ireland, DWS Alternatives Global Patricia Bandeira Vieira , Principal - Client and Partner Group, KKR	11:40 State of Play: to what extent is private debt recession proof?
12:20 Quick break to stretch and move between rooms			



Infrastructure
Investor

**Women in
Infrastructure Forum**
Virtual Experience 2020



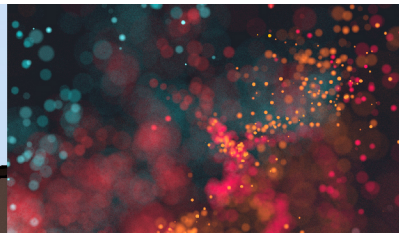
Private Equity
International

**Women in Private
Equity Forum**
Virtual Experience 2020



PERE

**Women in Real
Estate Forum**
Virtual Experience 2020



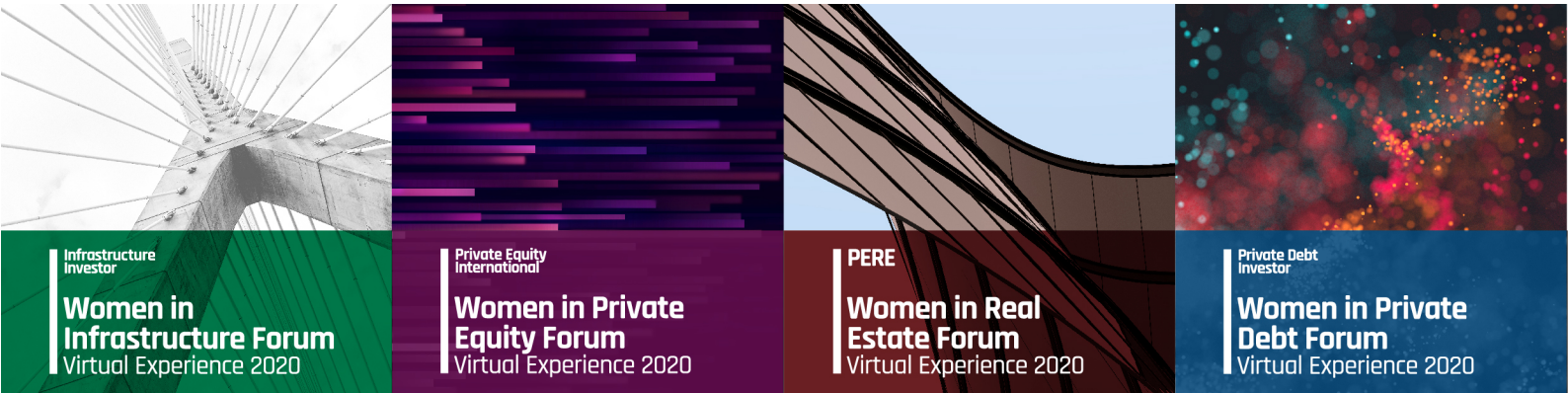
Private Debt
Investor

**Women in Private
Debt Forum**
Virtual Experience 2020

Women in Private Markets Summit

3-4 November

<p>12:25 To what extent are investments in digital infrastructure recession proof? Moderator: Dan McCarthy, Chief Executive Officer, One Search Emily Azer, Principal, GI Partners</p>	<p>12:25 Investor perspectives on private equity as the economic climate darkens Nina Kraus, Vice President, Hamilton Lane Simon Faure, Managing Director of Private Equity, Alternatives, M&G PLC</p>	<p>12:25 Office real estate: investing in a sector with an uncertain future Moderator: Isabel Ruiz Halter, Senior Consultant, One Search Maggie Coleman, Senior Managing Director, JLL Amy Johannes, Managing Director, Oaktree Capital Management Audrey Klein, Head of Fundraising, Kennedy Wilson Europe Anne Gales, Partner, Threadmark</p>	<p>12:25 Investor view: The evolving role of private debt within your alternative asset portfolio</p>
<p>13:00 Mid-day networking break 1:1 Meetings and meet the speakers</p>			
<p>14:30 The direction of travel: What will the future of transportation look like? Anke Heinze, Director of the Investments and Financing Department, AviAlliance Irina Frolova, Head Asset Management Infrastructure, PGGM Infrastructure Fund</p>	<p>14:30 Private Equity & ESG in the post-covid world Moderator: Kirsten Lapham, Partner, Proskauer Alison Humphrey, Director, ESG, TPG Amber Hilken, Partner, Head of Investment Relations & Communication, AnaCap</p>	<p>14:30 How covid-19 has created opportunities in the booming logistics market Martina Malone, Managing Director - Global Head of Capital Raising, Prologis</p>	<p>14:30 Where are opportunities in alternative credit due to current market disruption? Kirsten Bode, Co-Head of European Private Debt Fund, Muzinich and Co. Claire Harwood, Investment Director, Permira Debt Managers</p>
<p>15:10 Quick break to stretch and move between rooms</p>			
<p>15:15 Investing in the energy transition: Opportunities in a new investment environment Beverly Gower-Jones, Managing Partner, Clean</p>	<p>15:15 Value creation and working with portfolio companies through a crisis Lisya Bahar Manoah, Partner, Catalyst Fund Karen O'Mahony, Managing</p>	<p>15:15 Investor perspectives: What will happen to allocations to real estate in the next 12 months? Dr. Ilkka Tomperi, Head of Real Estate, Investment</p>	<p>15:15 To what extent is ESG leading investment decisions in private debt? Nicole Waibel, Managing Director, Crescent Credit Europe</p>



Women in Private Markets Summit

3-4 November

Growth Fund Lucy Heintz , Partner – Energy, Actis	Director, Peal Investments Maria Carradice , Portfolio Director, Mayfair Equity Partners	Director, Varma Gila Cohen , Managing Director, Real Estate and Private Equity, MUFG	Michelle Winters , Vice President, Northleaf Capital Partners
--	---	--	--

16:15-16:45

Speed networking half hour

This unique session will allow delegates to participate in at least 5 private one-on-one meetings.

17:30

Sponsorship opportunity for virtual wine tasting

Day two: Wednesday 4 November

08:00-09:15

Invitation only think-tanks and roundtables

These closed-door sessions will allow women to speak freely about the issues impacting their office and asset class. It is a closed door, open conversation where attendees can benchmark ideas and share best practices to gain solutions for common concerns.

- Infrastructure
- Private Debt
- Real Estate
- Private equity

09:30

Keynote Speech: building a successful career in business

09:45

Raising funds remotely: Can you raise millions without a handshake?

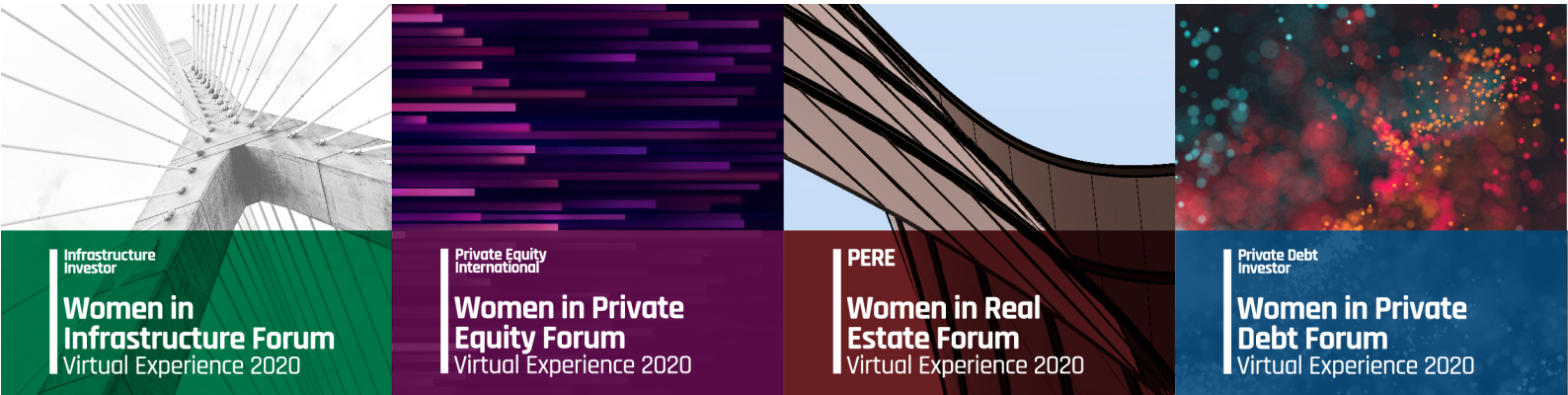
- Completing due diligence remotely
- Starting a new fundraise vs. completing one that had already begun
- Examples from the past few months and any learnings for future fund raising

Anamica Broetz, Head of Investor Relations, **DWS Private Equity**

Ellinor Schrewelius, Investment Director, **AP6**

10:15

Quick break to stretch



Women in Private Markets Summit

3-4 November

10:20

Why investors across private markets have been aiming for more co-investments

- To what extent are investors having to expand internal resource for co-investment?
- What type investors are more open to co-investment opportunities
- Comparing performance and fees to fund investments
- How co-investments give investors access to managers across different strategies

10:50

Highlights of the PEI LP Insight findings

The PEI Investor Research and Analytics team surveyed over 100 LPs to capture investor sentiment on asset allocation, relationships with GPs, and performance predictions. The study also features insight on gender diversity and inclusion. Investors range from established players with diverse fund portfolios, to those planning to make their first alternatives commitments in 2021

Nicole Douglas, Head of Investor Research, **PEI**

11:00

Networking Break including 1:1 meetings and meet the speakers

11:45

Will secondaries return to growth in the next stage of a new cycle?

- How have GP led deals performed in the past few months?
- Comparing risk/return/pricing to pre-covid levels
- To what extent are secondaries firms specialising in strategies and asset classes?
- Predictions for growth and size of the secondaries market in the next year and decade

Laura Shen, Partner and Co-Founder, **Headway Capital Partners**

Martha Heitmann, Partner, **LGT CP**

Kristin Shearer, Vice President, **Northleaf Capital Partners**

12:25

Quick break to stretch

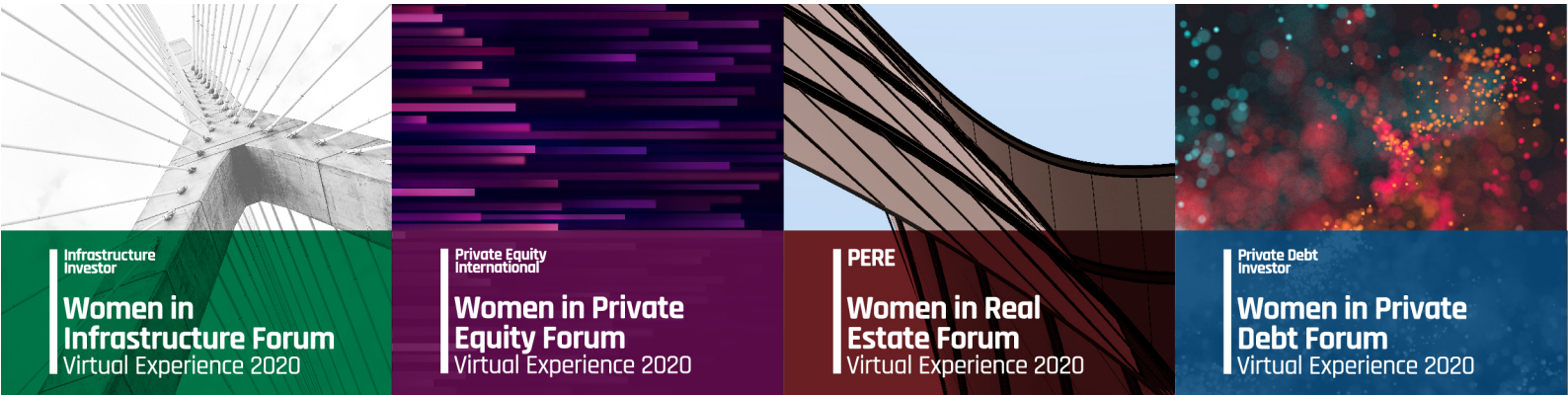
12:30

Innovations in driving diversity in private markets

This unique session will feature 5-minute thought provoking presentations on how business leaders have addressed diversity within their organisations

Lauren Harris, Director, **Northleaf Capital Partners**

Anna Follér, Sustainability Manager, **AP6**



Infrastructure
Investor

**Women in
Infrastructure Forum**
Virtual Experience 2020

Private Equity
International

**Women in Private
Equity Forum**
Virtual Experience 2020

PERE

**Women in Real
Estate Forum**
Virtual Experience 2020

Private Debt
Investor

**Women in Private
Debt Forum**
Virtual Experience 2020

Women in Private Markets Summit

3-4 November

13:00

Midday networking break

1:1 Meetings and meet the speakers

14:00

Speed networking

This unique session will allow delegates to participate in at least 5 private one-on-one meetings.

15:00

Close of conference